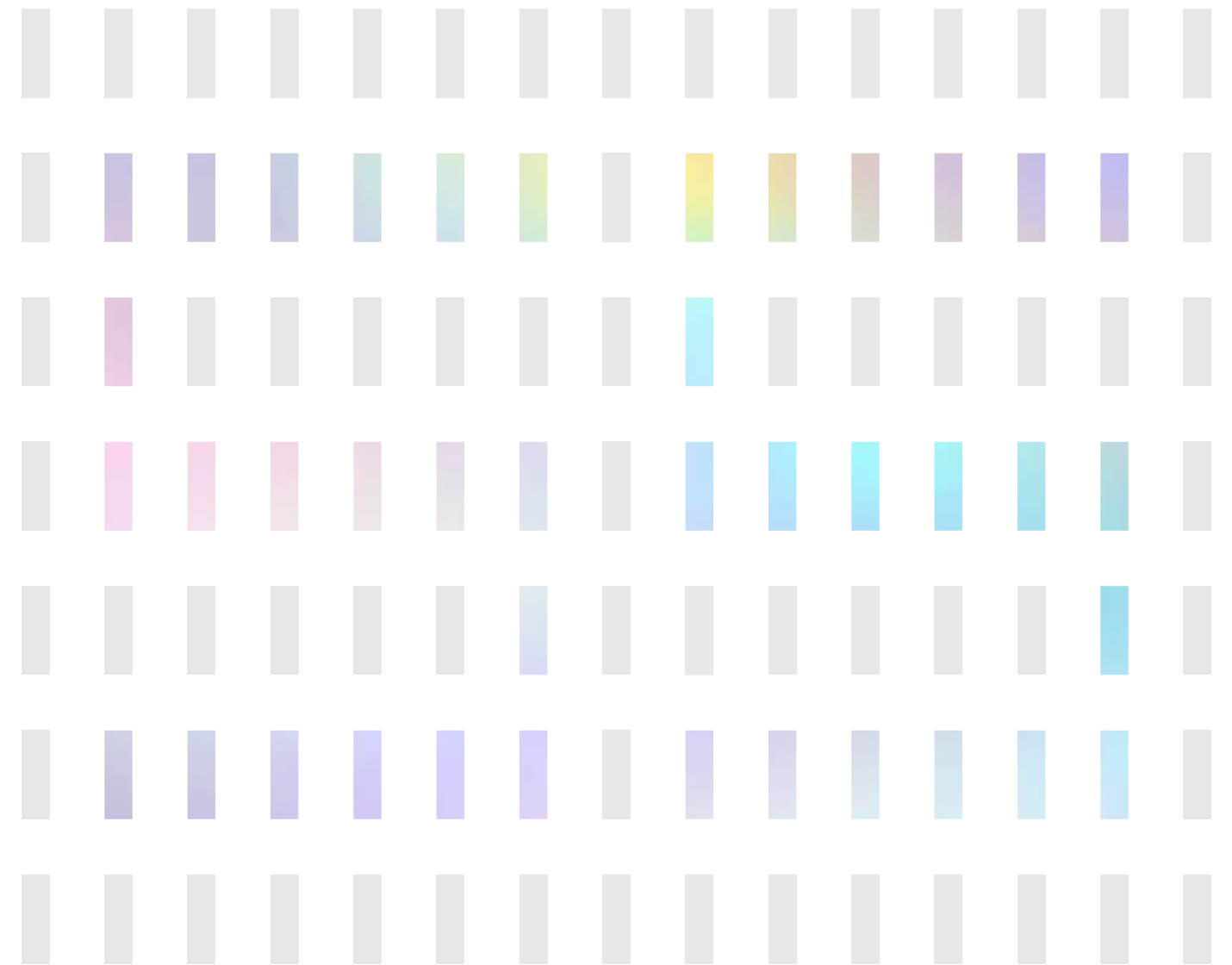


FOR THE BEST QUALITY

www.ssyenc.com





More creations by Ssangyong E&C lead to a more beautiful world

Ssangyong E&C has expanded Korea beyond its borders and has begun a new chapter in the history of luxury construction.

As Ssangyong E&C delivers more of its creations, the world becomes more beautiful than now and the future becomes more prosperous than ever.

Leader in prestige building projects around the world

No.1



Atlantis The Royal (Dubai, UAE)
Completion : 2023.02

ENR, a US magazine for global construction industry professionals, ranked Ssangyong E&C as the second best builder of hotels in 1998. Since then, the company has maintained its position at the top of the construction industry. Distinguishing itself from construction companies around the world, Ssangyong succeeded in building a portfolio of the most luxurious hotels with a total of 17,000 guest rooms, as well as hospitals with 12,000 beds. Today, Ssangyong E&C boasts a dominant place among leaders in prestige building projects around the world.

Miracle of 21st century architecture

52°



Marina Bay Sands Hotel (Singapore)
Completion : 2010.03

Ssangyong E&C successfully completed the Marina Bay Sands Hotel project in 27 months, which was highly recognized as the most difficult construction projects in the world. Because the hotel has a unique structure, which is inclined at 52 degrees at its apex, nearly 10 times more inclined than the Leaning Tower of Pisa, including the SkyPark, with a combined weight of more than 43,000 mid-size vehicles with the total length of 340m, and about 2,561 guest rooms in its three 57-story towers with SkyPark.

Green mark, Renewable energy

Eco-friendly



The Oceanfront @ Sentosa Cove (Singapore)
Completion : 2010.03

With the growing interest in environmental protection, Ssangyong E&C is promoting green management practices by engaging in projects based on hydrogen, photovoltaic energy, and other new and renewable energy sources/technologies. Together with Korea Gas Corporation and Pyeongtaek Energy Service, the company is currently pursuing the Pyeongtaek Hydrogen Fuel Cell Project – a project that can promote Ssangyong E&C's entry into the new and renewable energy field while building the foundation for its role as a lead player in the green energy business. The company is also spearheading the development of eco-friendly construction technologies, as demonstrated by the attainment of world-renowned green certifications, including the U.S. LEED certification and Singapore's BCA Green Mark.

Taking the lead in renovation projects

Leader



Ssangyong Apartment, Garak (Seoul, Korea)
Completion (expected) : 2030.08

Having successfully completed four apartment complex renovation projects, Ssangyong E&C is the top domestic contractor in the field of apartment remodeling. Since launching the industry's first dedicated remodeling team, the company has introduced a large number of new remodeling technologies, including the country's first introduction of pilotis in apartment remodeling, the vertical expansion of two additional floors, and the extension of elevator access to underground floors. It has also secured the Garak Ssangyong Phase 1 Remodeling Project, the largest apartment renovation project in the country. On top of leading the housing remodeling field in this way, Ssangyong E&C has also built an extensive track record and expertise in the renovation of commercial buildings at home and abroad. Notable restoration projects include The Raffles Singapore, the most treasured hotel in the city-state; Banyan Tree Club & Spa Seoul, Korea's first six-star hotel; the Ambassador Seoul Pullman; and Louis Vuitton Maison Seoul.

Miracle of Subway Construction

15cm



Seoul 923 Subway Station (Seoul, Korea)
Completion : 2010.02

Seoul Metro Line 9 Express Bus Terminal Station (Station No. 923) is considered the most challenging civil engineering feat among all Korean subway construction sections as it was built only 15 centimeters below the existing Seoul Metro Line 3. For the first time in the world, Ssangyong E&C applied both the tubular roof construction method (TRoM) and the cellular arch method (CAM) to build this station, a proud achievement recognized by reception of the Brunel Medal awarded from the UK's Institution of Civil Engineers (ICE).

As a renowned and tech-savvy leader in Korean subway construction that has completed more than 32 kilometers of subway sections in major cities, Ssangyong E&C continues to help expand subway systems not only across Korea but also in Singapore.

The Brunel Medal of ICE & Paper Award



The Brunel Medal is awarded every year to individuals or organizations operating in the construction environment industry for their contribution to the development of civil engineering by the prestigious Institution of Civil Engineers (ICE) of the U.K. who has since its foundation of 1818 more than 80,000 members in over 150 countries.

Gaining Competitiveness via Smart Construction Technologies

SMART



Facing the era of the Fourth Industrial Revolution, Ssangyong E&C is striving to enhance construction productivity and safety by actively introducing to project sites smart construction techniques that incorporate a wide range of advanced technologies (e.g., BIM, drones, robots, IoT, big data, and AI).

Particularly in the field of building information modeling (BIM), the latest 3D design method that enables the digitalized management of the entire construction process, the company has accumulated extensive expertise unparalleled among other firms at home and abroad. Its differentiated BIM competitiveness has been recognized through several awards, including the Grand Prize at the 2010 BIM Construction Awards, the Gold Plus Award (the second-highest honor) in the Project Category at the BCA BIM Awards 2014 organized by Singapore's Building and Construction Authority (BCA), and the Gold Award in the Organization Category at the BCA BIM Awards 2015.

Safety Record!

Champion



Downtown Line Stage 2 (Singapore)
Completion : 2016.06

Since 2008, Ssangyong E&C's domestic and overseas sites have adopted advanced safety management methods that have received the KOSHA-MS certification issued by the Korea Occupational Safety and Health Agency (KOSHA). The company's diverse safety management efforts (e.g., sharing and education, among staff and management, of accident risk factors concerning each construction process; and the establishment of a safety-first corporate culture) have allowed it to win the Champion Award at the Annual Safety Award Convention (ASAC) in Singapore, a country known for stringent construction regulations. On top of this, Ssangyong E&C has achieved a total of some 289.49 million accident-free man-hours (as of May, 2023) at its overseas project sites. Especially in Singapore, the company passed the mark of 120.67 million accident-free man-hours (as of May, 2023), including 16.75 million accident-free man-hours achieved at its subway construction sites – the world record among subway construction sites.

Do You Know That?



Global SAE-A is

proud major company in Korea, operating businesses, including one of the world's largest apparel export companies Sae-A Trading, in sectors like global apparel manufacturing & distribution, paper & packaging, construction, infrastructure, high-tech industry, and various cultural industry, thus contributing to enriching the lives of humanity all around the world.

GLOBAL BUSINESS

Clothing



Paper and Packaging



Construction, Infrastructure and Technology



Culture



BRAND ESSENCE

Experience the Best of Life

To provide the best products and service to help customers experience the best of life

MAIN VALUES

Trustworthy

Confidence in shared future

Based on constantly innovative company culture, seeking win-win relationship and development together with the interested parties, building trust in the process and the result

Outstanding

Greatest satisfaction through matching the value

By providing sustainable products and the best service experience, matching and enhancing a variety of customer value thus affording the greatest satisfaction

Pride

Pride through ambitious achievement

Based on creativity seeking the novelty and diversity, taking pride in achievement via constant challenges in work performance

BEHAVIOR PATTERN

Passionate

Passion for constant challenge, setting a goal in the next level of growth without settling for the present

Creative

Creativity for responding to ever-changing marketplace and trend and for generating business opportunities

Smart

Smart competence for innovative thinking to find new opportunities and to lead the change

Integrity

Attitude for contributing to growth of business partners and community development and for practicing ethical management

Maestro, Masterpiece with Ssangyong!



Raffles City Complex
(Singapore)
Completion : 1986.06

I M Pei

The legendary Chinese-American architect and one of the preeminent figures in the history of modern architecture once called Raffles City, which was his own design, and to which he refers to as the 'Masterpiece of My Life'.



Singapore Indoor Stadium
(Singapore)
Completion : 1989.10

Kenzo Tange

Kenzo Tange was the most influential architect in Japan's post war architecture and contributed substantially to making the country known internationally for its culture.



Oboe Hills (Seoul, Korea)
Completion : 2010.06

Itami Jun

Itami Jun is an internationally renowned Korean-Japanese architect who was awarded the Chevalier de l'Ordre des Arts et des Lettres, a top cultural honor bestowed by the French government and the 2nd International Summit on Asian Habitat. He has held a solo exhibition at the Musee Guimet in Paris.

Ssangyong E&C has created many signature buildings in different cities worldwide through working in conjunction with globally renowned architects, including those who won the Pritzker Architecture Prize, often called the Nobel Prize of the architecture world.



Marina Bay Sands Hotel
(Singapore)
Completion : 2010.03

Moshe Safdie

Moshe Safdie was an architect and urban designer who is most strongly identified with Habitat 67 presented at the World Expo in Montreal in 1967. He also participated in the restoration of Jerusalem.



LE Nouvel@KLCC
(Kuala Lumpur, Malaysia)
Completion : 2016.01

Jean Nouvel

Jean Nouvel is a light master, widely renowned not only in the circle of architecture but also in the circle of culture and arts. In 1983, he was awarded the Knight of the Order of Arts and the Letters in recognition of his contribution to architecture.



Yega, Byeollae New City
(Gyeonggi, Korea)
Completion : 2012.01

Perkins Eastman

Perkins Eastman is an international design firm founded by Lawrence Bradford Perkins, a Fellow of the American Institute of Architects (FAIA).



BEST QUALITY

SSANGYONG E&C

Ssangyong E&C has been acclaimed locally and internationally for its technological advancement and ability to ensure high quality construction, **as demonstrated by the winning of prestigious awards including National Architectural Culture Awards, Seoul Architecture Awards and Singapore Construction Awards.**

Its capability of constructing luxury buildings is also **shown by its score of 97 in the hotel category, the highest ever awarded under the Construction Quality Assessment System or CONQUAS, hosted by the Building and Construction Authority of Singapore.**

W Singapore Sentosa Cove (Singapore)

- 2011 WSH SHARP Awards Excellence
- 2012 CDL 5-star EHS (Environmental, Health & Safety)
- 2012 ROSPA Occupational Health & Safety Awards (Gold)
- 2012 WSH Performance Awards for Certificate of Recommendation
- 2013 WSH SHARP Award for Commendation Certificates (2013 Recognized by the Ministry of Land, Infrastructure and Transportation at the 2013 Korea Land and Urban Design Competition)
- 2014 FIABCI Award for World Silver Winner 'Hotel Category' (2014-2013 Asia Pacific Hotel Award - Highly Commended)
- 2014 BCA CEA Awards for Construction Excellence, 'Commercial/Mixed Development Category'

SINGAPORE CONSTRUCTION AWARDS (BCA)



W Singapore Sentosa Cove



Marina Bay Sands Hotel



The Oceanfront @ Sentosa Cove

NATIONAL ARCHITECTURAL CULTURE AWARDS OF KOREA



The NEXEN univerCITY



Pyeongchang-dong Oboe Hills



The Korea National University of Arts

SEOUL ARCHITECTURE AWARDS



General Lecture Center, Soongsil University



Art Center, Kookmin University

KOREA CIVIL ENGINEERING & ARCHITECTURE TECHNOLOGY AWARDS



Unam Grand Bridge



Seoul 923 Subway Station



1 2



3

BEST TECHNICAL SERVICES

SSANGYONG E&C

In line with the latest trends, Ssangyong E&C is **extending technical support to overseas construction projects**. Going beyond the general role of a contractor, **we strive to proactively deliver the services our clients deserve and expect through Early Contractor Involvement (ECI)**.

Ssangyong is leading the way in providing technical supports by offering Total Technical Service of the latest tender processes.

- 1 St. Regis Langkawi Hotel & Convention Center
- 2 The Ananti Penthouse & Hilton Busan
- 3 Four Seasons Hotel & Office Building in Jakarta

ECI (EARLY CONTRACTOR INVOLVEMENT)

SsangYong E&C provides various technical support services as ECI(Early Contractor Involvement) which offer additional customized technical suggestions besides fundamental design.

PRE-CONSTRUCTION SERVICE

We offer Pre-Construction Service by participating from planning and designing stage for optimal outcome and construction period reduction.

AIP & ADS (ADVANCE INFORMATION PACKAGE ALTERNATIVE DESIGN SOLUTION)

Advance Information Package (AIP) is an approach that has recently been adopted in Singaporean and Southeast Asian construction tenders. As part of value engineering, Ssangyong E&C has applied Alternative Design Solutions (ADS) to Singapore's Woodlands Health Campus (WHC) construction project.

FAST TRACK

Ssangyong E&C has applied Fast Track method in St. Regis Lankawi project (Malaysia) which has tremendously shorten its construction period even without a complete blueprint by building and designing at the same time.

DESIGN AND BUILD



Marina Coastal Expressway



Downtown Line Stage 2, Singapore



Seoul 923 Subway Station



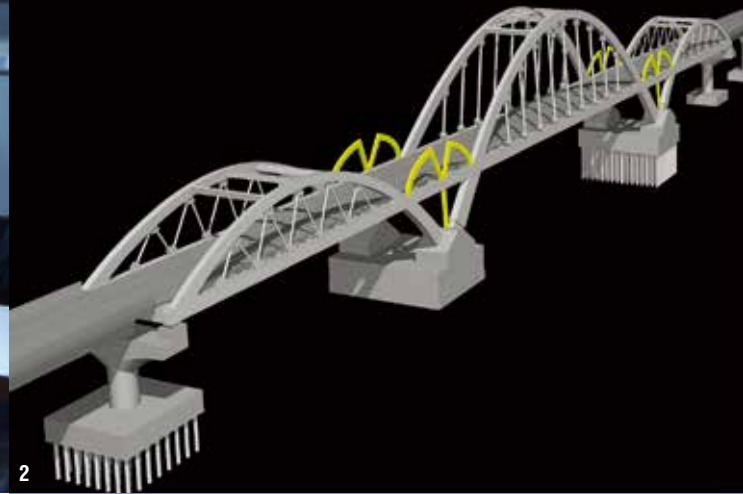
W Singapore Sentosa Cove



Bedok Mixed Development



The Oceanfront @ Sentosa Cove



BEST TECHNOLOGY

A Leader in Smart Construction

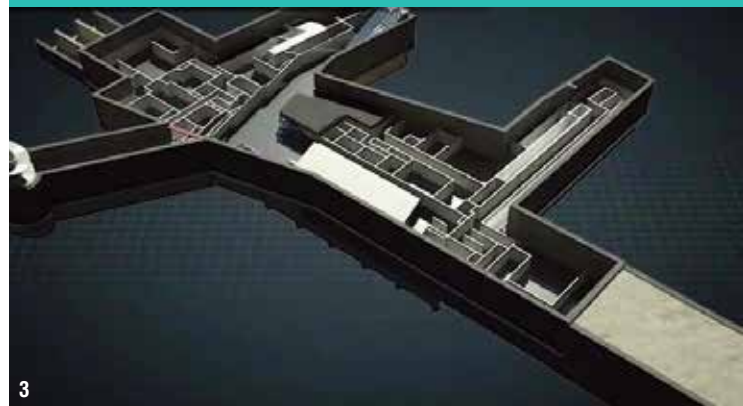
Ssangyong E&C adopted Building Information Modeling (BIM), a 3 dimensional designing method in 2006, and has sharpened it to an unparalleled level ever since, as demonstrated by its winning of the Grand Prix at the Korea BIM Awards for 3 years running from 2010 to 2012.

It is also acclaimed for its technological capability and track record in value engineering that allows it to first propose an optimal construction method and then work to reduce the construction period. In addition, it contributes to the overall development of construction technologies in Korea by applying a wide range of new techniques, such as one to construct sloped buildings and seismic control using dampers.

BIM

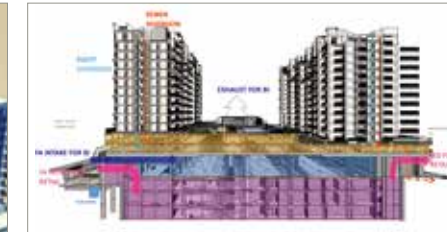
As the 3D design technique that digitalizes and manages the overall construction process, including planning, design, quotation, construction, maintenance, etc., the 3D design technique, enables atypical design elements and errors to be checked in real-time, unlike with a 2D technique, and thus prompt decision-making through on-line cooperation with the relevant personnel is possible. Also, it is possible to reduce the energy consumption of a building by 60% through an optimized BIM design, which is regarded as being the core technology of the environmentally-friendly construction area.

- 1 Korea's first to apply building information modeling: State Namsan Tower
- 2 Honam Express Railway, KTX
- 3 Downtown Line Stage 2 (Singapore)



BCA BIM AWARDS-GOLD PLUS

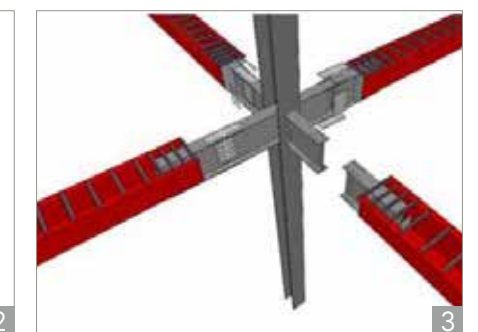
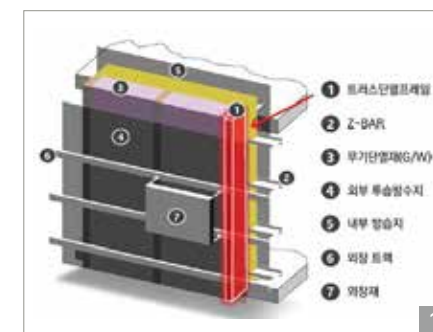
Ssangyong E&C received the highest score in the private project section and so grabbed the Gold Plus Award at the Building Information Modeling (BIM) Awards, which were given out by Singapore's Building and Construction Authority (BCA) in 2014, for the Bedok Mixed Development Project.



BIM APPLICATED PJT

Bedok Mixed Development Project / Downtown Line Stage 2 (Singapore) / Marina Coastal Expressway / State Tower Namsan / Platinum, Namsan / Honam Express Railway, KTX / The Federation of Korean Industries Building / Seoul Metropolitan Government Buildings / Thomson East Coast Line T 308 / North-South Corridor 102, 111 / Busan Metro Line 1 Track 5 / Chung-ju Tangeum Boat Race Course / Singapore's North - South Corridor Sections N102, N111 / National Highway No. 14 Section 1, 11 (Hamyang - Changnyeong) / Pohang New Port Swell Control Facility Construction Project / SaRang Church / The Ananti Penthouse & Hilton Busan / YALE-NUS Collagee / Woodlands Health Campus Singapore / Atlantis The Royal / Deira Waterfront Plot1-3

NEW EXCELLENT TECHNOLOGY (NET)



1. Dry Exterior Insulation Using Truss Insulation Frame and Water Repellent Glass Wool (New Construction Technology No. 901)
2. Bridge Expansion Method Using JH Refraction Expansion Joints (JHR-EJ) for Bridges Consisting of Hinged Links and Dust-Proof Cover Plates (New Construction Technology No. 841)
3. Construction Method Using Composite Beams (BESTOBEAM) Consisting of H-Shaped and U-Shaped Sections (New Construction Technology No. 835)



1 Seoul Metropolitan Government Buildings
 2 CJ CheilJedang Building
 3 The Federation of Korean Industries Building



BEST GREEN

A Leader in Global Green Growth

Ssangyong E&C pursues business that is **built on new and renewable energy technologies** – technologies related to hydrogen energy, photovoltaic energy, wind power, and **other sources that do not rely on fossil fuels and create no carbon emissions.**

The company also helps realize low-carbon green growth that can benefit humanity and the environment, by introducing to construction sites **green certifications from home and abroad such as Singapore's BCA. Green Mark and the U.S. LEED certification.**

G-SEED(green Standard for Energy & Environmental Design)

Korea's only system to certify the eco-friendliness of structures based on results from their evaluation

- Seoul Metropolitan Government Buildings
- CJ CheilJedang Building
- The Federation of Korean Industries Building
- Soongsil University Economics & Business Building



녹색건축인증
 최우수(그린1등급)
 ★★★★★

LEED CERTIFICATION GOLD



- STATE TOWER NAMSAN(2011)

LEED(Leadership in Energy and Environmental Design) is set of rating system for the design, construction, operation and maintenance of green buildings. Developed by the U.S Green Building Council (USGBC), LEED is an internationally recognized green building certification system.



State Tower Namsan

BCA GREEN MARK CERTIFICATIONS 12 TIMES WINNER



BCA GREEN MARK

- BCA GREEN MARK

The Singaporean government established the Green Mark in 2005 aiming at making the world's renowned environmental friendly accreditation. The Building & Construction Authority(BCA) awards the green mark annually and it is recognized as one of the major standards on environmental-friendliness along with LEED in the US and BREEAM in Britain.



The Oceanfront @ Sentosa Cove



Woodlands Health Campus Singapore



Downtown Line Stage 2 (Singapore)

- LTA Annual Safety Award Convention 2010/2011 (Merit)/2012 (Excellence)/2013 (Champion)/2014
- 2011/2012/2013/2014/2015/2016 RoSPA Occupational Health & Safety Award (Gold)
- 2011/2012 LTA Annual Safety Award Convention- Accident Free Million Man-hour's Award
- 2011/2013/2014/2015 WSH Sharp Awards
- Attained 10 million accident free man-hours (2013.07) Recorded the longest zero accident period in the history of subway construction in Singapore (16.75 million man-hours / 2016.03)



Marina Coastal Expressway (Singapore)

- 2010/2011/2012/2013 LTA Annual Safety Award Convention (Excellence)
- 2010/2011/2012/2013/2014 RoSPA Occupational Health & Safety Award (Gold)
- 2010/2011/2012/2013/2014 WSH Sharp Awards
- 2012 LTA Annual Safety Award Convention-Accident Free Million Man-hour's Award (10.7 million man-hours)
- 2016 BCA Award for Construction Excellence

BEST SAFETY

Safety-First Corporate Philosophy

Ssangyong E&C practices advanced safety management methods developed at home and overseas through diverse initiatives, including the adoption of a risk assessment activity system linked to KOSHA-MS, the use of a database that contains 2,268 risk factors related to 51 construction processes and categorized by accident types, and the establishment of a safety management system based on consultations with outside experts.

SAFETY RECORDS

16,750,000 man-hours (2016.03)

12,000,000 man-hours (2010.07)

10,700,000 man-hours (2014.08)



Downtown Line Stage 2, Singapore



Marina bay Sands Hotel, Singapore



Marina Coastal Expressway, Singapore

SAFETY AWARDS



Awarded the Champion shield for Singapore's urban metro phase 2 (2013)



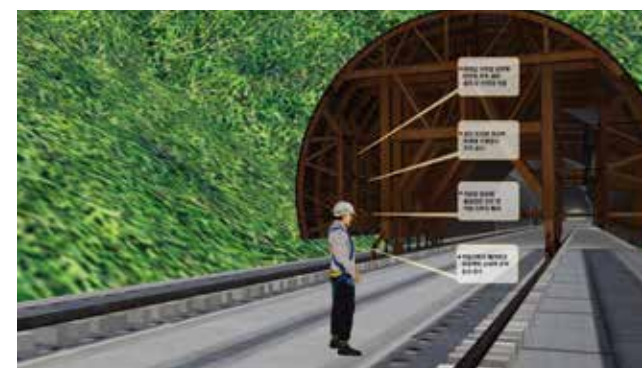
2



3

1. Recognized at the LTA Annual Safety Award Convention for 5 years running
2. Recognized at the RoSPA Awards in the U.K. for 12 years running
3. Recognized at Singapore MOM SHARP Awards for 25 times

SAFETY CONTROL USING BIM



Avatar



Equipment interference

Hotel & Complex

Hospitals

Office Buildings

Educational & Cultural Facilities

Commercial, Distribution Facilities, etc.

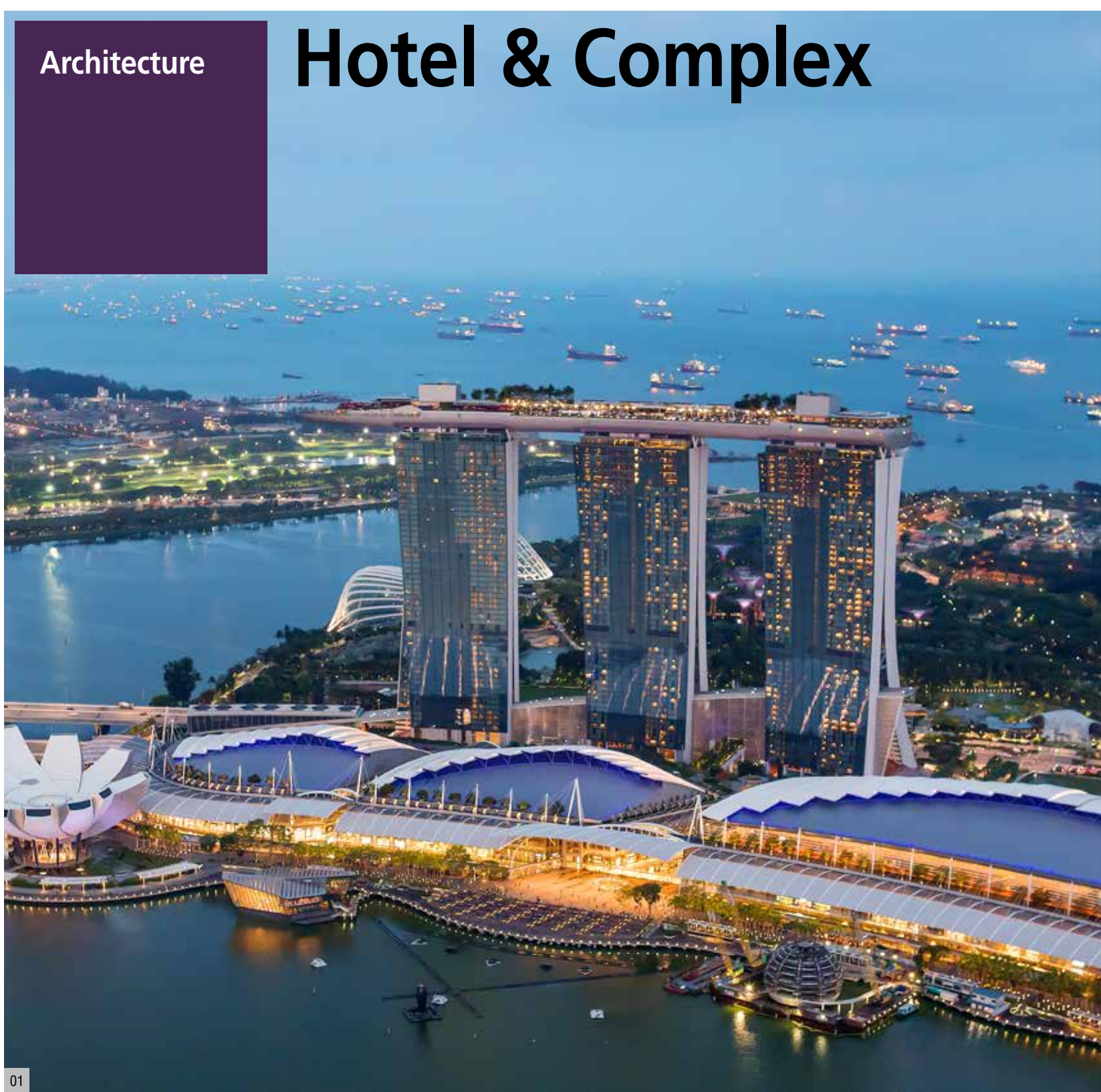
Sports & Leisure Facilities

Architecture



Marina Bay Sands Hotel (Singapore)

Hotel & Complex



01

01, 02, 03

Marina Bay Sands Hotel (Singapore)

Icon of Singapore

- A miracle of 21st century architecture, sloping to 52 degrees from the ground surface
- 340 meter long SkyPark ■ 206m high-rise building
- Three buildings, with 3 stories underground and 57 stories above and home to a combined 2,561 guestrooms

- Completion : 2010.03 / Client : Marina Bay Sands Pte. Ltd. (Subsidiary of Las Vegas Sands Group)
- 2,561 guestrooms
- The main project of Marina Bay Integrated Resort in which the Singaporean government invests a total of USD 5.5 billion to secure a next generation growth engine
- Designed by Moshe Safdie, a globally renowned architect
- The gradient influenced construction method applied to hotels was designated as a new construction technology (No.608) by the Ministry of Land, Infrastructure and Transport. This represented the first time a technology that had been applied to an overseas project was chosen
- 12 million Accident-Free Man Hours
- 2010 BCA Awards (Green Mark-Gold)
- 2010 Korea Civil Engineering & Architecture Awards (Excellence)
- 2010 Korean Construction and Civil Work Award (Excellence)
- 2010 Korea Overseas Construction Awards (Grand Prize)
- 2012 BCA Awards (Platinum, Gold)

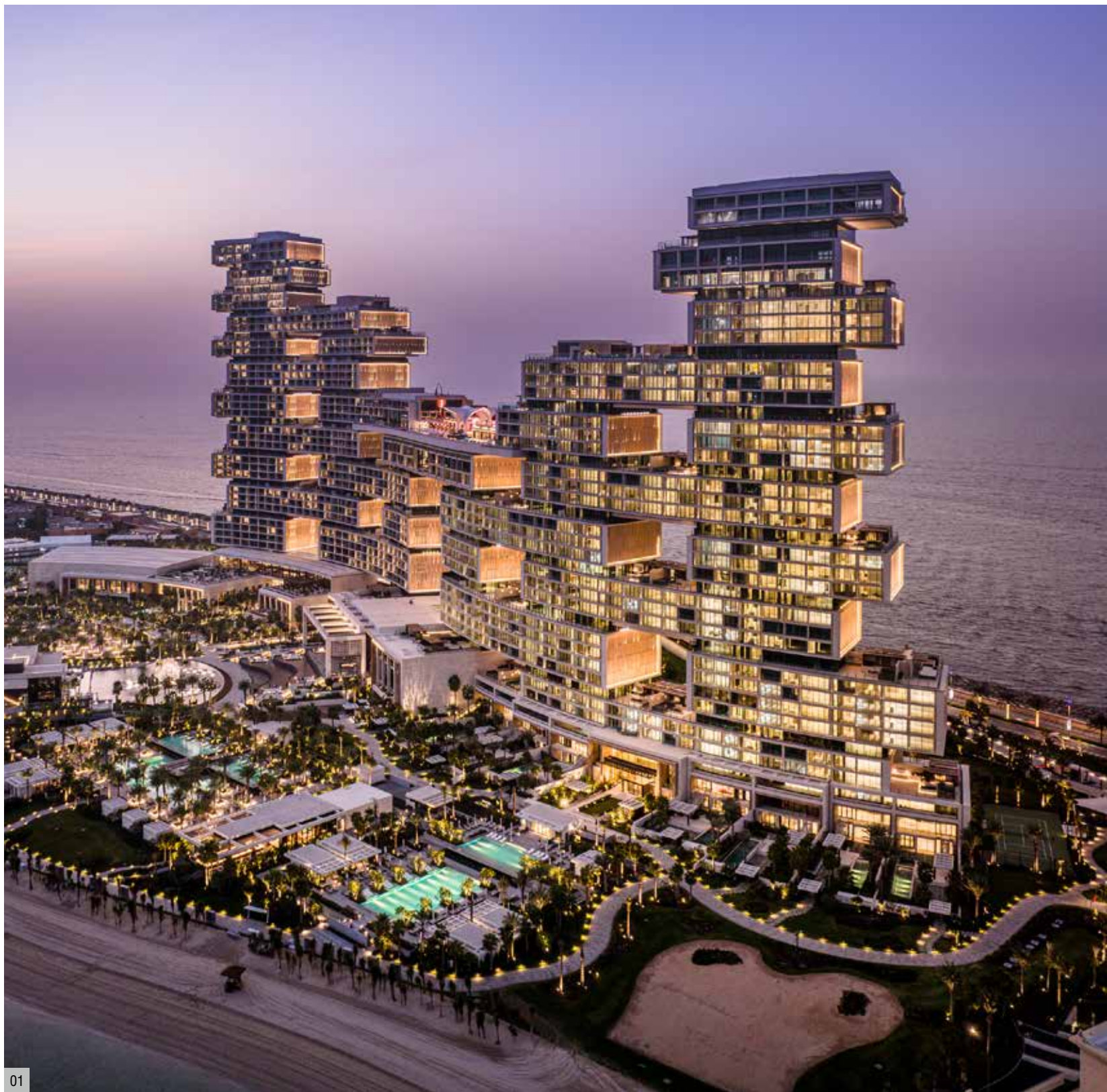


02



03





01



02



03

01, 02, 03

Atlantis The Royal (Dubai, UAE)

- Completion : 2023.02 / Client : Atlantis the Palm 2 Limited (Subsidiary of Investment Corporation of Dubai)
- Three hotel buildings (44F, 34F, 22F) with 795 rooms
- Three residence buildings (39F, 28F, 19F) with 231 units
- Podium (hotel facilities) and Townhouses
- A landmark project, located in the Palm Jumeirah, an artificial archipelago in Dubai





309m High-rise Hotel

- 309m high-rise building, 55 stories hotel with 408 guestrooms
- The third tallest hotel in the world (at the time of its completion)
- One of the three major hotels in Dubai (at the time of its completion)

01

01 Jumeirah Emirates Towers (Dubai, UAE)

- Completion : 2000.04 / Client : Emirates Tower LLC
- 408 guestrooms
- The first Korean- European joint venture construction company



02



03

02, 03

Grand Hyatt Dubai Hotel (Dubai, UAE)

One of the three major hotels in Dubai

- Luxury hotels and condominiums that symbolize the city of Dubai

- Completion : 2003.02 / Client : The Government of Dubai
- 674 guestrooms



Recognized in the Guinness Book of World Records as the tallest hotel in the world (1986)

- 226m high-rise building
- Designed by I. M. Pei, a globally renowned architect

01

01 Raffles City Singapore (Singapore)

- Completion : 1986.06 / Client : Raffles City Pte. Ltd. (Subsidiary of CapitalLand) • **1987 BCA Awards for Construction Excellence**
- 2,030 guestrooms (Swissotel The Stamford : 1,261 guestrooms / Fairmont Singapore : 769 guestrooms)
- An 73-storey hotel, Two 28-storey hotels, An 42-storey office, An 7-storey podium

Work Processes



02, 03

W Singapore Sentosa Cove (Singapore)

2014, 2010 BCA Awards

- Designed to reduce the indoor temperature by up to 3°C without air-conditioning
- Certified with the highest possible BCA Green Mark certification : Platinum

- Completion : 2012.04
- Client : Cityview Place Holdings Pte. Ltd. (Subsidiary of City Development Ltd.)
- 240 guestrooms
- Given the highest score (97 points in the hotel category) ever under Singapore's BCA CONQUAS (quality appraisal)
- **2010 BCA Awards Green Mark - Platinum**
- **2011 WSH SHARP Awards-Winner**
- **2012 CDL 5-Star EHS(Environmental, Health & Safety) Excellence**
- **2012 RoSPA Occupational Health & Safety Awards (Gold)**
- **2012 WSH Performance Awards for Certificate of Recommendation**
- **2013 WSH SHARP Award for Commendation**
- **2014 FIABCI Award for World Silver Winner 'Hotel Category' (2014-2013 Asia Pacific Hotel Award - Highly Commended)**
- **2014 BCA Awards for Construction Excellence**



Won the BCA Green Mark Platinum Certification in 2010

02



03



01



02



03

01, 02

Raffles Singapore (Singapore)

Performed a full-scale, complete remodeling on Singapore's iconic hotel

- A hotel constructed in 1887, famed as the pearl of Singapore
- Completion : 1991.04 / Client : Property Management Pte. Ltd. (Subsidiary of DBS Land)
- 103 guestrooms
- The 100 year-old Raffles Singapore is treated as a national treasure and nicknamed the 'Pearl of Singapore'

04

Grand Hyatt Jakarta Hotel
(Plaza Indonesia Complex / Jakarta, Indonesia)

Landmark of Jakarta

- A hotel with 455 guestrooms, luxury condominiums and shopping centers (including additions)
- Designed to withstand an earthquake of 8.1 on the Richter scale
- Completion : 1991.07 / Client : PT. Bimantara Eka Santosa (Subsidiary of Bimantara Group)
- 427 guestrooms
- The largest commemorative complex in Indonesia
- Built with an earthquake resistant structure, designed for no structural damage even in a severe earthquake
- Ssangyong won the Plaza Indonesia Extension Project in 2006 thanks to the absolute trust the company has formed with its client



04

05

St. Regis Langkawi Hotel & Convention Center (Langkawi, Malaysia)

The venue for ASEAN + 3 Summit (2015)

- The venue for the official events of the 2015 ASEAN + 3 Summit and accommodation of the leaders
- (Phase1)Completion : 2015.02 / (Phase2)Completion : 2015. 12
- Client : Rajawali Group / Ministry of Finance, Malaysia
- 85 guestrooms, 4 VIP rooms above ocean, a convention center, restaurants, waterfront installations
- Completed on a pre-construction basis



05



01

01

Hyatt Regency Guam Hotel (Guam)

- Completion : 1993.10 / Client : Eie Guam Corporation
- 450 guestrooms
- Joint Venture with Maeda Corporation, Japan



03

03

Hyatt Centric Hotel (Former Andaz Hotel) (Dubai, UAE)

- Completion : 2021.12
- Client : Wasl LLC (Limited Liability Company)
- 173 guestrooms



02



02

Four Seasons Hotel & Office Building in Jakarta (Jakarta, Indonesia)

- Completion : 2016.06 / Client : PT. Greenland Rajawali Utama (Subsidiary of Rajawali Group)
- A 20-story hotel with 124 guestrooms, a 53-story office building and a 6-story podium
- Completed on a pre-construction basis



04

04

Intercontinental Hotel Bali (Bali, Indonesia)

- Completion : 1993.06 / Client : PT. Citra Jimbaran Indah Hotel
- 417 guestrooms
- A deluxe hotel built in traditional Indonesian style in Bali, a world famous resort island
- Turn-key project



05

05

Gorilla Nest Lodge & Golf Resort (Rwanda)

- Completion : 2020.01 / Client : ICD
- 22 lodge-type luxury hotel buildings and subsidiary facilities



01

01

Le Meridien Amman Hotel
(Amman, Jordan)

- Completion : 1984.01 / Client : The Financial Institute
- 310 guestrooms
- The largest building complex in Jordan



02

02

Novotel Clarke Quay Hotel
(Liang Court Complex / Singapore)

- Completion : 1984.05 / Client : Liang Court Pte. Ltd.
- 403 guestrooms



03

03

Four Points by Sheraton Singapore
(Singapore)

- Completion : 1985.03 / Client : Keck Seng Hotel Pte. Ltd.
- 476 guestrooms



04

04

Double Tree by Hilton Hotel
(Johor Bahru, Malaysia)

- Completion : 1998.03 / Client : Yetcom Investment Ltd.
- 333 guestrooms

05

Marriott Residence Inn Anaheim
(California, USA)

- Completion : 1988.12 / Client : Ssangyong Int'l Inc.
- 200 guestrooms
- Near Disneyland, registered as the 122nd hotel
- The first overseas hotel development project undertaken by a Korean firm



05

06

Marriott Residence Inn San Diego
(California, USA)

- Completion : 1989.07 / Client : Sangyong Int'l Inc. / Kerney Mesa Associates
- 144 guestrooms



06

07

Marriott Residence Inn Sacramento
(California, USA)

- Completion : 1992.09 / Client : Ssangyong Sacramento Ltd.
- 126 guestrooms



07

08

Hyatt Regency Fukuoka Hotel
(Fukuoka, Japan)

- Completion : 1993.05 / Client : Maeda / Fukuoka Jisho
- 246 guestrooms
- Received the Best View Award presented by Fukuoka City, Japan in 1994



08

09

Pan Pacific Hanoi (Hanoi, Vietnam)

- Completion : 1998.02 / Client : West Lake Int'l Co. (Subsidiary of Liang Court)
- 325 guestrooms
- Constructed a deluxe hotel with traditional Japanese style buildings in Hanoi, well known for its beautiful lake



09



01

01
Banyan Tree Club & Spa Seoul (Seoul, Korea)

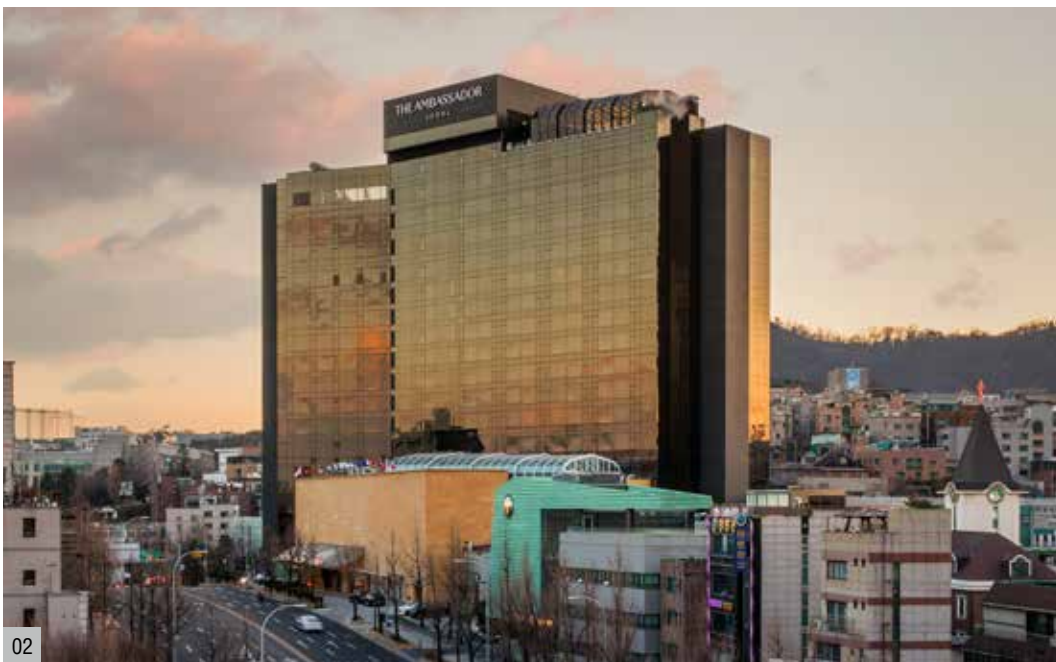
- Completion : 2010.06
- 50 guestrooms
- All-suite guestrooms
- Ssangyong transformed Namsan Tower Hotel, a symbol of Seoul built by the late Soo-Geun Kim, a famed Korean architect, in 1969, into the elite Banyan Tree Club & Spa Seoul, through renovation



05

05
The Ananti Cove Penthouse & Hilton Busan (Busan, Korea)

- Completion : 2017.04
- 310 guestrooms hotel, three luxurious condominium 218 guestrooms



02

02
The Ambassador Seoul - A Pullman Hotel (Seoul, Korea)

- Completion : 2022.11
- 457 guestrooms
- Opened in 1955, it is the oldest private hotel in Korea. Remodeling of the hotel's exterior, rooms, restaurants, bars, etc



06

06
Lotte Hotel World
 (Lotte World Complex / Seoul, Korea)

- Completion : 1989.12
- 513 guestrooms
- Leisure complex consisting of deluxe hotel, department store, sports and cultural facilities



03

03
Four Points by Sheraton Josun Seoul Station (Seoul, Korea)

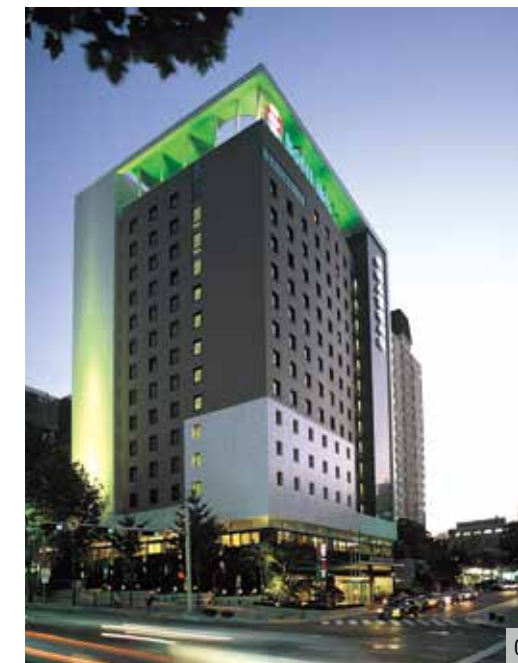
- Completion : 2015.02 • 342 guestrooms



04

04
Fraser Place Central-Seoul
 (Seoul, Korea)

- Completion : 2005.07 / Client : DSIV Co.,Ltd. & DSDL Co.,Ltd.
- 258 guestrooms



07

07
IBIS Styles Ambassador Seoul Gangnam (Seoul, Korea)

- Completion : 2003.08 • 317 guestrooms



08

08
Benikea Premier Songdo Bridge Hotel
 (Incheon, Korea)

- Completion : 2009.07
- 241 guestrooms
- Application of new and renewable energies (solar energy)
- 2009 Selected as a Good Design in Korea

Domestic and Overseas Chained-Brand Hotel Projects constructed by Ssangyong E&C

Total number of rooms : 16,241
(As of Jun, 2023)

■ Chained-Brand Hotels

Brand Name	Year of Completion	Region	Name of Hotel	Number of rooms
Hyatt Hotels & Resorts	2021	UAE	Hyatt Centric Hotel	173
	2003	UAE	Grand Hyatt Dubai Hotel	674
	1993	USA	Hyatt Regency Guam Hotel	450
	1993	Japan	Hyatt Regency Fukuoka Hotel	246
	1991	Indonesia	Grand Hyatt Jakarta Hotel	427
	1985	Singapore	Grand Hyatt Singapore Hotel	677
Starwood Hotels & Resorts	2016	Malaysia	St. Regis Langkawi Hotel & Convention Center	89
	2012	Singapore	W Singapore Sentosa Cove	240
	1984	Jordan	Le Meridien Amman Hotel	310
Accor Hotels	2021	Korea	Grand Ambassador Seoul Pullman *Renovation	457
	2008	Korea	Ibis Ambassador Suwon	240
	2003	Korea	Ibis Styles Ambassador Seoul Gangnam	317
	1997	Korea	Novotel Seoul Ambassador Doksan	218
	1984	Singapore	Novotel Clarke Quay Hotel	403
Marriott International Hotels	2015	Korea	Four Points by Sheraton Seoul, Namsan	342
	1992	USA	Marriott Residence Inn Sacramento	126
	1989	USA	Marriott Residence Inn San Diego	144
	1988	USA	Marriott Residence Inn Anaheim	200
	1985	Singapore	Four Points by Sheraton Singapore	479
	Hilton Hotels	2017	Korea	The Ananti Penthouse & Hilton Busan
2001		Korea	Millennium Seoul Hilton *Renovation	78
1998		Malaysia	Double Tree by Hilton Hotel	333

Brand Name	Year of Completion	Region	Name of Hotel	Number of rooms
Four Seasons Hotels & Resorts	2016	Indonesia	Four Seasons Hotel & Office Building in Jakarta	124
FRHI Hotels & Resorts	1986	Singapore	Swissotel The Stamford	1,261
	1986	Singapore	Fairmont Singapore (Raffles City Singapore)	769
	1991	Singapore	Raffles Singapore	103
Las Vegas Sands Group	2010	Singapore	Marina Bay Sands Hotel	2,561
Pan Pacific Hotel	1998	Vietnam	Pan Pacific Hotel	325
Jumeirah	2000	UAE	Jumeirah Emirates Towers	408
Intercontinent Hotels Group	1993	Indonesia	Intercontinental Hotel Bali	417
	1990	Korea	Holiday Inn Seongbuk (former Sang-A Hotel)	64
Banyan Tree	2010	Korea	Banyan Tree Club & Spa Seoul *Remodeling	50
Lotte	1989	Korea	Lotte Hotel World	513
Frasers Hospitality	2005	Korea	Fraser Place Central-Seoul	258
Benikea	2009	Korea	Benikea Premier Songdo Bridge Hotel	241
Others	2024	Korea	Lusongce Yongpyeong	60
	2023	Poland	Przemysl Sports Complex *Renovation	28
	2023	UAE	Atlantis The Royal	795
	2021	Korea	Yongpyong Apolis	129
	2020	UAE	Hotel Wyndham	290
	2020	Korea	CHA Medical Tourism Hotel	63
	2019	Rwanda	Gorilla Nest Lodge and Golf Resort	22
	2002	Korea	Yongpyong Resort	436
	1990	Brunei	Royal Brunei Polo Club	24
	1987	Korea	Hotel Capital	287
1985	Korea	Yongpyong Dragon Valley Hotel	195	
Total				16,241

Hospitals



The largest hospital in South East Asia
(at the time of its completion)
2001 BCA Awards for Construction Excellence

01

01 Tan Tock Seng Hospital (Singapore)
• Completion : 1998.11 / Client : Ministry of Health • 1,189 beds • Core medical functions available even in emergency (in compliance with Swiss defense standards)

02

New K.K. (Kandang Kerbau) Women's and Children's Hospital (Singapore)

Singapore's largest hospital for women and children which gave birth to 35% of the entire Singaporean population

1999 BCA Awards for Construction Excellence

- Completion : 1996.08 / Client : Ministry of Health
- 825 beds
- Core medical functions available even in emergency in compliance with Swiss defense standards



02

03

Selayang Hospital (Kuala Lumpur, Malaysia)

- Completion : 1998.09 / Client : Ministry of Works And Public Utilities
- 964 beds
- W on the order in partnership with Obayashi Corporation in Japan



03

04

Palau National Hospital (Palau)

- Completion : 1992.12 / Client : Office of Planning & Statistics
- 69 beds
- Exceeded U.S. standards for healthcare facilities



04



01

01
Woodlands Health Campus Singapore
 (Singapore)

A state-of-the-art medical complex of an unprecedented scale

- Completion (expected) : 2023.12 / Client : Ministry of Health Holdings (MOHH)
- 1,500 beds
- A hospital complex composed of 8 buildings (1 underground and 7 aboveground flrs.)
- A highly complex and challenging project that connects four different types of medical and healthcare facilities (general hospital, community hospital, nursing home and hospice facility) into a single, comprehensive medical complex with cutting-edge information technology



02

02
Biotech Research Center
 (Incheon, Korea)

- Completion : 2017.12 (Research Building) / 2018.06 (Retail & Office Building)
- Research Building : B2-3F (BNCT & MRI) / Retail & Office Building: B2-9F (Residential neighborhood facilities and office space)
- A construction project that entails the installation of state-of-the-art medical facilities and equipment including the world's only ultra-high performance MRI machine and a facility for Boron Neutron Capture Therapy (BNCT), a next-generation cancer treatment



03

03
CHA Medical Group Yeoksam Medical Tourism Hotel
 (Seoul, Korea)

- Completion : 2020.11
- One building featuring a medical center (48 beds) and a medical tourism hotel (63 rooms)



Architecture

04

04
Bundang CHA Medical Center
 (Gyeonggi, Korea)

Korean Architecture Award
 (1995)

- Completion : 1995.03 • 600 beds
- healthcare Combin system for both Korean traditional medicine and western healthcare services



05

05
CHA Ilsan Global Life Center
 (Gyeonggi, Korea)

- Completion : 2019.10
- 282 beds
- Korea's largest women's hospital featuring advanced medical facilities and commercial spaces



01

01
Yangcheon Medical Center
 (Seoul, Korea)
 • Completion : 2011.01
 • 355 beds
 • Eco-friendly building : Geothermal and Solar Heat Energy used



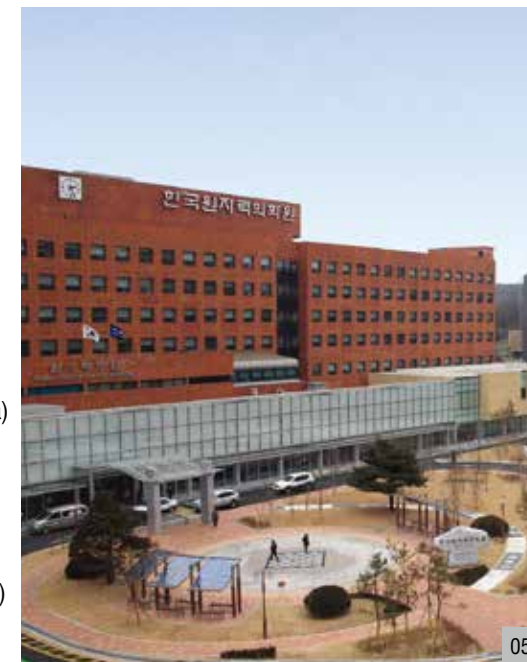
04

04
Seoul Medical Center (Seoul, Korea)
 • Completion : 2010.11 • 623 beds
 • Eco-friendly building : Geothermal Energy used



02

02
Korea University Ansan Hospital
 (Gyeonggi, Korea)
 • Completion : 1998.08
 • 517 beds



05

05
Korea Cancer Center Hospital (Seoul, Korea)
 • Completion : 2008.01
 • 494 beds



06

06
Good Morning Hospital (Gyeonggi, Korea)
 • Completion : 2001.06
 • 321 beds



03

03
Seongnam Jungwon-gu Public Health Center (Gyeonggi, Korea)
 • Completion : 2008.04
 • 102 beds
 • Eco-friendly building : Geothermal and Solar Heat Energy used
 • 2008 Korean Construction and Civil Work Award
 • 2009 Good Design Award



07

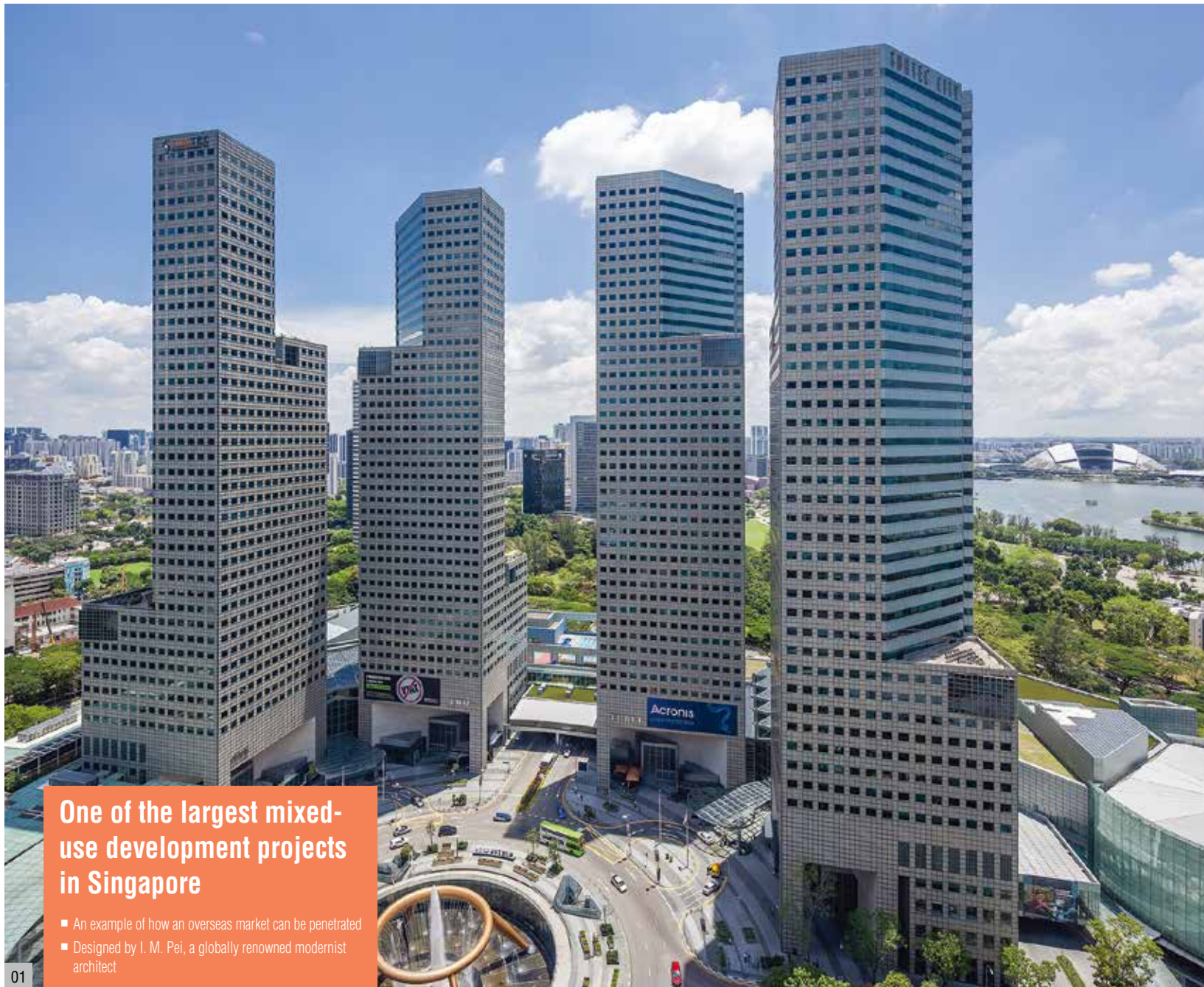
07
Kangnam Medical Center (Seoul, Korea)
 • Completion : 1996.12
 • 400 beds



08

08
Jeju Medical Center (Jeju, Korea)
 • Completion : 2002.07
 • 308 beds

Office Buildings



One of the largest mixed-use development projects in Singapore

- An example of how an overseas market can be penetrated
- Designed by I. M. Pei, a globally renowned modernist architect

01 Suntec City Complex (Singapore)
• Package 4 Completion : 1995.06 / Package 5 Completion : 1997. 07 / Client : Suntec City Development Pte. Ltd.
• 1997 BCA Awards for Construction Excellence



A state-of-the-art intelligent building

- 267m high-rise building, 53 stories skyscraping office building

02 Capital Tower (Singapore)
• Completion : 2000.06 / Client : CapitaLand • Located on Robinson Road, at the heart of Singapore's central business district
• 2001 BCA Awards(Best Buildable Design) • 2002 BCA Awards(Construction Excellence)



01

01 Four Seasons Hotel & Office Building in Jakarta (Jakarta, Indonesia)

- Completion : 2016.06 / Client : PT. Greenland Rajawali Utama (Subsidiary of Rajawali Group)
- A 20-story hotel with 124 guestrooms, a 53-story office building and a 6-story podium
- Completed on a pre-construction basis

04 Plaza Indonesia Complex Extension (Jakarta, Indonesia)

A landmark structure that represents the most luxurious buildings in Indonesia

- A building complex consisting of a 42 story office building, a 47 story condominium and a 7 story shopping center
- Completion : 2009.05 / Client : PT Plaza Indonesia Realty Tbk (Subsidiary of Bimantata Group)



04



02

02 Singapore Labour Foundation Complex (Singapore)

- Completion : 1985.12 / Client : Singapore Labor Foundation



03

03 Capital Square Parcel-E Building (Singapore)

- Completion : 1998.07 / Client : Octaville Invest Ltd. (Subsidiary of Keppel Land)
- 2000 BCA Award for Construction Excellence, Best Buildable Design

05 Tamara Bank (Jakarta, Indonesia)

- Completion : 1990.10 / Client : PT Pantoru Mas (Subsidiary of Tamara Group)



05

06 Arab Bank Headquarters (Amman, Jordan)

- Completion : 1982.08 / Client : The Financial Institute



06



01

01
ICD-Brookfield Place (Dubai, UAE)
 • Completion : 2020.11 / Client : Al Salwa Investment LLC (Subsidiary of Investment Corporation of Dubai)
 • One office tower (B7/54F)



02

02
Wingtai Building (Singapore)
 • Completion : 1991.06

03
Seoul Metropolitan Government Building (Seoul, Korea)
 • Completion : 2012.08
 • G-SEED certified in 2013
 • Application of new and renewable energies (geothermal heat, solar heat, solar energy, natural lighting)



03



04

04
State Tower Namsan (Seoul, Korea)
The highest price per square meter for office space at the time of sale (KRW 7.95 million/m²)
 ■ 2010 Korea BIM Awards (Grand Prize)
 ■ Korea's first BIM center
 • Completion : 2011.06
 • G-SEED certified in 2011
 • 2010 Korea BIM Awards (Grand Prize)
 • 2011 Seoul Architecture Awards (Excellence)
 • 2011 Korea Civil Engineering & Architecture Awards (Excellence)



01

01
The Federation of Korean Industries Building (Seoul, Korea)

245m High-rise Building

- 50 stories
- Features a state-of-the-art intelligent building system
- Building uses integrated photovoltaics instead of a conventional building envelope

- Completion : 2013.09
- G-SEED certified in 2013



04

04
Centre Point Gwanghwamun (Seoul, Korea)

The highest price per square meter for office space at the time of sale (KRW 8.2 million/m²)

- Completion : 2013.07



02

02
Pangyo Korea Expressway Corporation Smart Center (Gyeonggi, Korea)

- Completion : 2022. 01



03

03
Daejeon KEPCO ICT Center (Daejeon, Korea)

- Completion : 2021. 09



05

05
DMC (Digital Media City) Hitech Business Center (Seoul, Korea)

- Completion : 2008. 03



01

01

The Nexen UniverCITY
(Seoul, Korea)

Korea Construction Culture Awards (2019)

- Completion : 2019.03
- One office building (B2/8F)
- Korea Civil Engineering & Architecture Technology Awards (2019)



02

02

CJ CheilJedang Building (Seoul, Korea)

- Completion : 2010.10
- Won the Korea Eco-friendly Architecture Excellence Certification in 2010

03

Shinhan Investment Corp. Building
(Seoul, Korea)

Korea Construction Culture Awards (1995)

- Completion : 1995.06



Architecture

03

04

Daejeon Knowledge Industry Center
(Daejeon, Korea)

- Completion : 2022.10

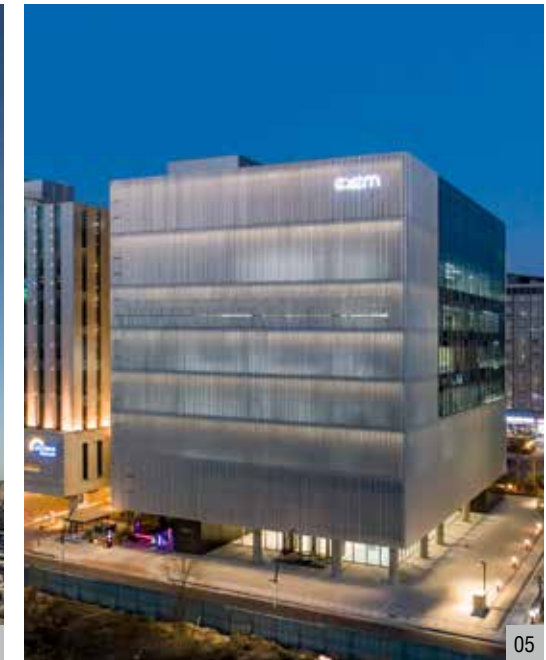


04

05

Magok Exem Office (Seoul, Korea)

- Completion : 2022.11



05



01

01

KT&G – Sejong (Sejong, Korea)

- Completion : 2020.08
- One Officetel (206 unit), Two Office building (B4/13F)



02

02

Korea Technology Finance Corporation Headquarters Building (Busan, Korea)

- Completion : 2011.04
- Application of new and renewable energies (geothermal heat, solar energy)



03

03

KT&G Building / KOSMO Tower (Seoul, Korea)

Korea Construction Culture Awards (1999)

- Completion : 1998.10
- 1998 Seoul Architecture Awards (Excellence)



04

04

Midas Asset Office Building (Seoul, Korea)

- Completion : 2019.04



05

05

Magok Ourhome Food Research Institute (Seoul, Korea)

- Completion : 2020.10

Educational & Cultural Facilities



01

01 | Kookmin University (Seoul, Korea)
• Completion : 2011.01

02

International Education Center, Kookmin University (Seoul, Korea)

Korea Construction Culture Awards (1999)

• Completion : 1999.11



02

03

Art Center, Kookmin University (Seoul, Korea)

Korea Construction Culture Awards (2002)

• Completion : 2001.08



03

04

Welfare Center, Kookmin University (Seoul, Korea)

• Completion : 2005.06



04

05

Sungkok Library, Kookmin University (Seoul, Korea)

• Completion : 1993.07
• 16th Korea Association of Architects Awards (1994)



05



01



02



03



04

01, 02

The Korea National University of Arts
(Seoul, Korea)

Korea Construction Culture Awards (2007)

- Completion : 2006.09
- 2006 Korea Civil Engineering & Architecture Awards (Grand Prize)
- 2008 Selected as a Good Design in Korea

03

General Lecture Center, Soongsil University (Seoul, Korea)

Korea Construction Culture Awards (2008/Grand Prize)

- Completion : 2007.07
- Education facility designed as a space of harmonious coexistence between cutting-edge technology and art
- 2009 Selected as a Good Design in Korea

04

Soongsil University Economics & Business Building (Seoul, Korea)

- Completion : 2019.12
- One lecture hall building (B2/6F)

05

Soongsil University Student Hall
(Seoul, Korea)

Korea Construction Culture Awards (2013/Grand Prize)

- Completion : 2011.08



05

06

Minjung (Elementary / Junior & High) School (Seoul, Korea)

Korea Construction Culture Awards (1994/Grand Prize)

- Completion : 1994.02



06

07

Han Kyoungjik Memorial, Soongsil University (Seoul, Korea)

Korea Construction Culture Awards (1998)

- Completion : 1997.08



07



01

01

Yale NUS college (Singapore)

BCA Awards Green Mark – Platinum (2013)

• Completion : 2015.10 / Client : National University of Singapore



02

02

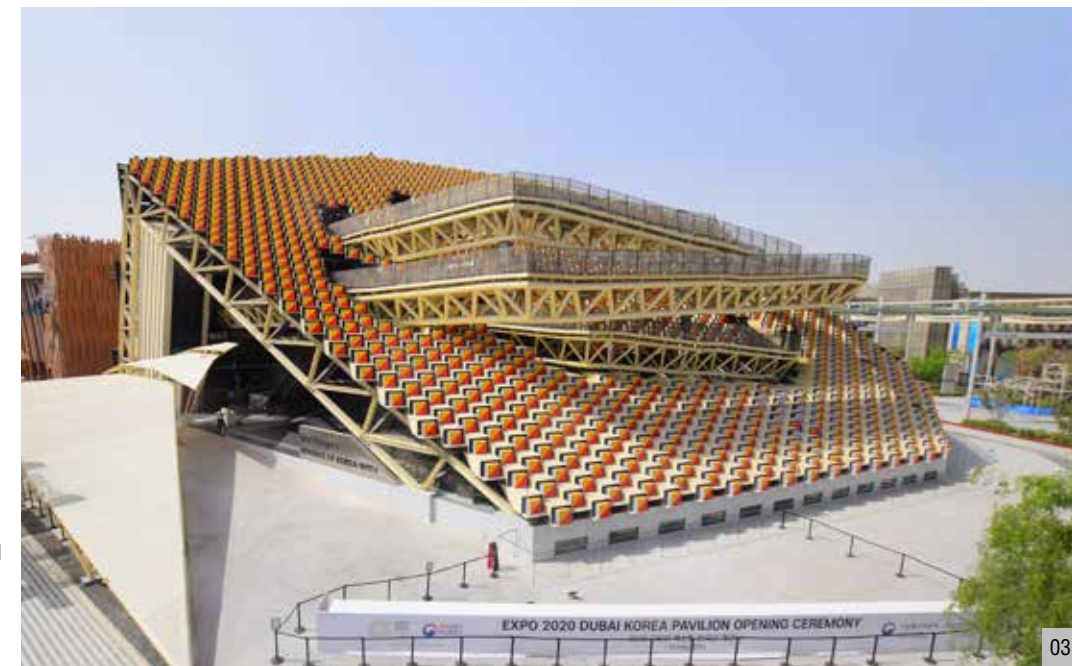
Guam Southern High School (Guam)

• Completion : 1999.05 / Client : Department of Public Works

03

Dubai EXPO 2020 Korea Pavilion
(Dubai, UAE)

- Completion : 2021.09 / Client : KOTRA
- The Korea Pavilion for exhibitions and performances related to Republic Korea during the 2020 Dubai EXPO. This conveys the importance of change in the future society that virtual movement will bring by visualizing mobility, the theme of Korea Pavilion.



03

04

Hyangseol Memorial Library, Soonchunhyang University
(Chungnam, Korea)

Korea Construction Culture Awards (1997)

• Completion : 1996.08



04

05

Guri Culture & Art Center
(Gyeonggi, Korea)

- Completion : 2012.08
- Application of new and renewable energies (geothermal heat, solar energy)



05

06

Medium and Small-sized Enterprise Center, Soongsil University
(Seoul, Korea)

• Completion : 2001.04



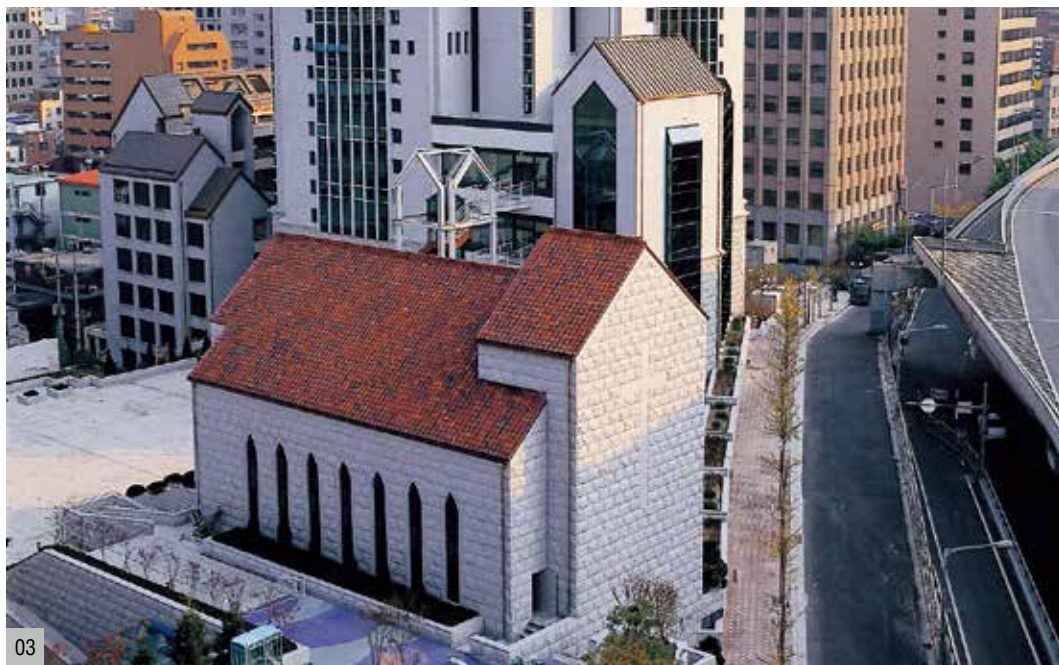
06



01



02



03

01, 02

SaRang Church (Seoul, Korea)

Underground space without columns that can accommodate 6,500 seats – Korea's largest

■ Application of a cutting-edge 3D design method (BIM)

- Completion : 2013.11
- The main chapel that accommodates 6,500 is the biggest in size among underground chapels in Korea. The SaRang Community Church has much symbolic value as a religious building through its large-scale facility that can accommodate as well as its unique building exterior, which was previously unseen in the country.

03

The 50th Anniversary Hall of Youngnak Church (Seoul, Korea)

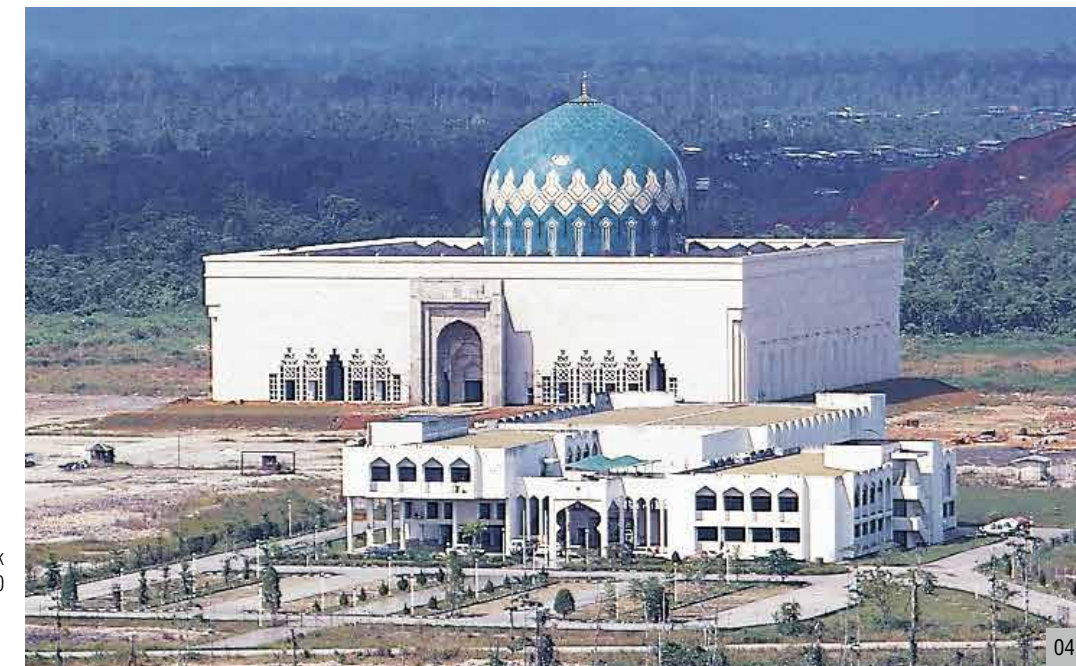
Korea Construction Culture Awards (1998)

- Completion : 1997.09
- **1997 Seoul Architecture Awards**

04

Sarawak State Mosque (Malaysia)

- Completion : 1989.10 / Client : State Government of Sarawak
- One large roof dome (diameter: 32m, height: 28m) and 40 smaller domes (diameter: 10m, height: 8m)
- Designed by Sami Mousawi, a globally renowned designer of mosques



04

05

Suyeoungno Church (Busan, Korea)

- Completion : 2001.08
- The largest church south of Seoul, with seating for 8,500 worshippers



05



06

06

Gangbuk Cheil Church Education Center (Seoul, Korea)

- Completion : 2005.03

07

Gangbuk Cheil Church (Seoul, Korea)

Korea Construction Culture Awards (2001)

- Completion : 2001.03



07



08

08

Seongdo Church (Seoul, Korea)

- Completion : 1997.05
- The ceiling was constructed using the Derako system for magnificent acoustic effects

Commercial, Distribution Facilities, etc.



02



01

01, 02 **Raffles City Singapore Shopping Center** (Singapore)
• Completion : 1986.06 / Client : Raffles City Pte. Ltd. (Subsidiary of Capital Land)



03

03 **Liang Court Complex Shopping Center** (Singapore)
• Completion : 1984.08 / Client : Liang Court Pte. Ltd.



04

04 **Plaza Indonesia Complex Shopping Center** (Jakarta, Indonesia)
• Completion : 1991.07 / Client : PT Bimantara Eka Santosa (Subsidiary of Bimantara group)



01

01

Bedok Mall (Singapore)

Received the Construction Excellence Award (CEA), Singapore's highest honor in construction

2017 BCA Awards for Commercial / Mixed Development

- Completion : 2015.11 / Client : Brilliance Residential (1) Pte. Ltd. & Brilliance Trustee Pte. Ltd. (Subsidiary of CapitaLand)
- 2014 BIM Awards - Gold Plus



02

02, 03

Quayside Isle (Singapore)

BCA Awards Green Mark – Platinum (2011)

- Completion : 2012.10 / Client : Cityview Place Holdings Pte. Ltd. (Subsidiary of City Development Ltd.)
- 2011/2012 'CDL 2010 5-Star' EHS (Environmental, Health & Safety) Silver Medal
- 2012 WSH Performance Awards
- 2013 WSH SHARP Award for Commendation Certificates



03

04

Bucheon Technopark III Biz-City (Gyeonggi, Korea)

- Completion : 2007.12
- Twelve buildings 1-basement with 13-story
- About 330 thousand m², the largest of its kind in Asia
- 2008 Korea Civil engineering & Architecture Awards



04

05

Garden Five (Seoul, Korea)

- Completion : 2008.12
- Application of new and renewable energies (geothermal heat, solar energy)



05

06

DMC (Digital Media City) Hitech Business Center (Seoul, Korea)

- Completion : 2008.03



06

Sports & Leisure Facilities



01, 02, 03

Yongpyeong Resort (Gangwon, Korea)

Host site of the Pyeongchang 2018 Olympic Winter Games and Korea's largest four season resort

• Completion : 2002.10

04

Yongpyeong Apolis Condo
(Gangwon, Korea)

• Completion : 2021.11





01

04

Jeonju Worldcup Stadium (Jeonju, Korea)

- Completion : 2001.10
- Inspired by local cultural icons: Hapjukseon(a traditional folding bamboo fan), Sotdae(a traditional shaman symbol), and Gayagum(a traditional stringed musical instrument)



04



02

01, 02

Kranji Racecourse (Singapore)

- Completion : 1999.05 / Client : Singapore Turf Club
- Singapore's millennium project
- A spectator arena with a 30,000 seating capacity (including a fully air-conditioned 3,000-seat grandstand)

05

Goyang Stadium (Gyeonggi, Korea)

- Completion : 2003.09



05



03

03

Singapore Indoor Stadium (Singapore)

BCA Awards for Construction Excellence (1991)

Designed by Kenzo Tange

- Used the Pantadome method

- Completion : 1989.10 / Client : Singapore Sports Council(SSC)
- This project was commissioned by the Singapore Sports Council to attract various international sporting events. The indoor sporting-facility is the largest thus far in Singapore.

06

The 2nd Sports Complex, Seongnam (Gyeonggi, Korea)

- Completion : 2001.11



06



01

01

Olympic Gymnasium (Seoul, Korea)

- Completion : 1985.08
- The largest indoor gymnasium in Korea
- A world first in the application of the super-light-cable-dome roof construction method
- Received Seoul Citizen's Awards in 2004 for Ssangyong's remodeling project



02

02

Yongin Sports Park (Gyeonggi, Korea)

- Completion : 2017.12
- Application of a cutting-edge 3D design method (BIM)



03

03

Yongin City Gymnasium (Gyeonggi, Korea)

- Completion : 2003.04



04

04

Kuching Indoor Stadium (Malaysia)

- Completion : 1988.09 / Client : State Government of Sarawak
- The first overseas project to be designed by domestic architects and constructed by a Korean firm



05

05

Eunhwassam Country Club (Gyeonggi, Korea)

- Completion : 1992.12



06

06

Yongpyong Golf Club (Gangwon, Korea)

- Completion : 1990.06



07

07

Birch Hill Club House (Gangwon, Korea)

- Completion : 2003.05

Housing & Remodeling

Residential Buildings
Building & Residential Remodeling

Banyan Tree club & Spa Seoul (Seoul, Korea)

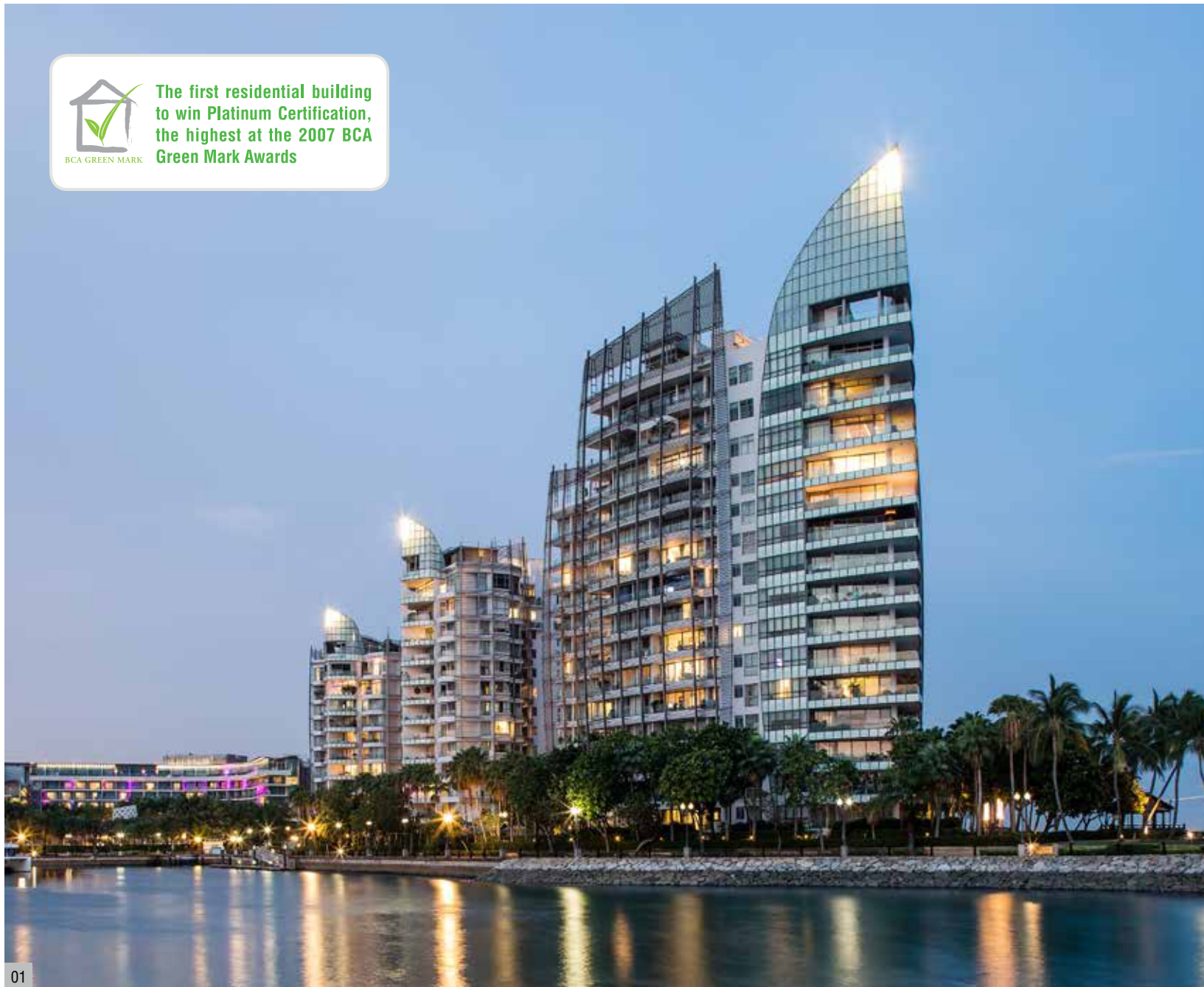
Residential Buildings



02



The first residential building to win Platinum Certification, the highest at the 2007 BCA Green Mark Awards



01



03

01, 02, 03, 04

The Oceanfront @ Sentosa Cove (Singapore)

One of the most eco-friendly residences in Singapore

- Five 12-to-15 stories buildings housing 264 residential units
- The landmark of the Sentosa development project

- Completion : 2010.03 / Client : TC Development Pte. Ltd. (Subsidiary of City Development Ltd.)
- 2007 BCA Awards Green Mark - Platinum
- 2007 PUB Friends of Water Award
- 2008 WSH Innovation Awards (Silver)
- 2008 RoSPA Occupational Health & Safety Awards (Merit)
- 2009 RoSPA Occupational Health & Safety Awards (Silver)
- 2009 BCA Green & Gracious Builders Awards (Excellence)
- 2011 Korea Green Construction Industry Awards (Grand Prize)
- 2011 BCA Construction Productivity Awards - Best Practices and Innovation (Gold) Award



04



01



01
LE Nouvel @ KLCC (Kuala Lumpur, Malaysia)

201m High-rise Building
Designed by Jean Nouvel

- Completion : 2016.04 / Client : Hartamaju Sdn. Bhd. (Subsidiary of Wing Tai Group)
- 49 stories

04
Bedok Residences (Singapore)

Received the Construction Excellence Award (CEA), Singapore's highest honor in construction

2017 BCA Awards for Commercial / Mixed Development

- Completion : 2015.11 / Client : Brilliance Residential (1) Pte. Ltd & Brilliance Trustee Pte. Ltd (Subsidiary of CapitaLand)
- 2014 BIM Awards - Gold Plus



04



05

05
Parc Oasis Condominium (Singapore)

- Completion : 1994.08 / Client : Marcobilt Developers Pte. Ltd.
- 950 dwelling unit
- Initially, it was planned to offer 210 apartments for sale. However, because of the overwhelming demand, a total of 710 apartments, including offerings planned for the 2nd and 3rd phases, were sold out, a record for Singapore



02



03

02
Damansara City 2 Residence
(Kuala Lumpur, Malaysia)

- Completion : 2016.03 / Client : Damansara City Sdn. Bhd. (Subsidiary of Hong Leong Group, Malaysia)
- 370 dwelling unit

03
Suasana Sentral Condominium
(Kuala Lumpur, Malaysia)

- Completion : 2001.11 / Client : Onesentral Park Sdn. Bhd. (MRCD / CapitaLand)
- 198 dwelling unit
- 40 stories twin towers condominium in Malaysia

06
Changi Rise Condominium (Singapore)

BCA Awards for Construction Excellence (2005)

- Completion : 2004.05 / Client : City Developments Ltd.
- 598 dwelling unit
- Design-build project, where one company is in charge of both design and construction
- 2006 FIABCI Prix d'Excellence Awards



06



01

01

Forest Woods Condominium (Singapore)

- Completion : 2020.11 / Client : CDL (City Developments Limited)
- 519 dwelling units



02

02

Bayshore Park Condominium (Singapore)

BCA Awards for Construction Excellence (1987)

- Completion : 1986.05 / Client : Ocean Front Pte. Ltd.
- 1,083 dwelling units
- One of the most attractive residential complexes in Singapore with 32 exterior building edges



03

03

Tanglin Park Condominium (Singapore)

- Completion : 1989.07 / Client : City Developments Ltd.
- 274 dwelling units

04

Peirce Villas (Singapore)

BCA Awards for Construction Excellence (2000)

■ US\$6 million per unit at the time of initial sales

- Completion : 1998.04 / Client : City Developments Ltd.
- 30 dwelling units
- One of the most luxurious residences in Singapore



04



05

05

Palm Spring Condominium (Singapore)

- Completion : 1997.12 / Client : Winwise Invest Ltd. (Subsidiary of Wing Tai Group)
- 167 dwelling units



06

06

Horizon Towers Condominium (Singapore)

- Completion : 1984.05 / Client : Horizon Tower Pte. Ltd.
- 212 dwelling units & 12 penthouse suites
- Located in Leonie Hill, the high-end residential area of Singapore with a view of downtown



01

01

The 1 Residences (Dubai, UAE)

- Completion : 2022.06 / Client : Park 1 LLC (Wasl SPV)
- Two residence buildings (B3/44F) with 753 units



02

02

Atlantis Staff Accommodation Building (Dubai, UAE)

- Completion : 2019.09 / Client : Atlantis Staff Accommodation Building
- Four residential buildings (15F) with 1,758 units



03

03

Deira Waterfront Development Phase 1 - Plot 3 (Dubai, UAE)

- Completion : 2020.07 / Client : Deira Waterfront Development LLC
- 350 dwelling units



04

04

Deira Waterfront Development Phase 1 - Plot 12 (Dubai, UAE)

- Completion : 2022.02 / Client : Deira Waterfront Development LLC
- 179 dwelling units



05

05

Dubai Silicon Oasis Architecture (Dubai, UAE)

- Completion : 2019.04 / Client : ITHRA DUBAI



01

01

Riviera Point Condominium
(Ho Chi Minh, Vietnam)

**The tallest residence in
Ho Chi Minh, Vietnam**

- Completion : 2014.12 / Client : Riviera Point Limited Liability Company (Subsidiary of Keppel Land)
- 40 stories
- 3 buildings housing 549 dwelling units



02

02

Hanoi Tower Center (Hanoi, Vietnam)

- Completion : 1997.12 / Client : Hanoi Tower Center Co. Ltd. (Subsidiary of Liang Court)
- 204 dwelling units
- A landmark in Hanoi, a symbol of Vietnam's open-door policy

03

Westchester Housing District
(California, USA)

- Completion : 1998.09 / Client : Catellus Residential - Vista Ladera, LLC
- Valencia near LA, a newly-rising residential district



03

04

Stevenson Ranch Housing District
(California, USA)

- Completion : 1998.09 / Client : Catellus Residential - Vista Ladera, LLC
- Valencia near LA, a newly-rising residential district



04

05

Tustin Ranch Housing District
(California, USA)

- Completion : 1999.12 / Client : Catellus Residential - Tustin 11, LLC
- Orange County, California



05



01

01

The Platinum Sajik Asiad (Busan, Korea)

- Completion : 2020.03
- 6 apartment buildings (B2/41F)
- 59 ~ 84㎡ 914 dwelling units



04

04

The Platinum Gwangju (Gyeonggi, Korea)

- Completion : 2022.02
- 15 apartment buildings (B3/19F)
- 59 ~ 97㎡ 873 dwelling units



02

02

The Platinum Omokcheon (Suwon, Korea)

- Completion : 2022.09
- 10 apartment buildings (B4/22F)
- 39 ~ 84㎡ 930 dwelling units



05

05

The Platinum Gwangsan (Gwangju, Korea)

- Completion : 2020.12
- 13 apartment buildings (B1/17F)
- 76 ~ 84㎡ 765 dwelling units



03

03

Juanpark Xi the Platinum
(Incheon, Korea)

- Completion : 2023.01
- 13 apartment buildings (B2/29F)
- 55 ~ 109㎡ 2,054 dwelling units



06

06

The Platinum Bupyeong (Incheon, Korea)

- Completion : 2021.12
- 10 apartment buildings (B3/23F)
- 39 ~ 119㎡ 811 dwelling units



01

01
The Platinum Geoje Asiad
 (Busan, Korea)

- Completion : 2023.01
- 5 apartment buildings (B3/33F)
- 81 ~ 107㎡ 482 dwelling units



02

02
The Platinum Premier (Gyeonggi, Korea)

- Completion (expected) : 2023.12
- 14 apartment buildings (B2/35F) and one neighborhood commercial facility buildings
- 59 ~ 141㎡ 1,696 dwelling units



03

03
The Platinum Jamsil (Seoul, Korea)

- Completion : 2022.08
- 192 dwelling units(B4/16F) and one neighborhood commercial facility buildings



04

04
The Platinum Seoul Station
 (Seoul, Korea)

- Completion : 2023.07
- 576 dwelling units (B7/22F)



05

05
Oboe Hills (Seoul, Korea)

Korea Construction Culture Awards (2011)

- Completion : 2010.06
- 463 ~ 497㎡ 18 dwelling units
- Designed by Itami Jun, a world renowned Korean architect living in Japan



06

06
Tuscany Hills (Gyeonggi, Korea)

- Completion : 2010. 10
- 158~409㎡ 91 dwelling units



01

01

ORWIESE (Gyeonggi, Korea)

- Completion : 2011. 09
- 146m², 149m² 32 dwelling units



02

02

King's Garden (Seoul, Korea)

- Completion : 2004.05
- 34 - 208m² 1,391 dwelling units
- The first commercial & residential building complex project, which triggered a boom in the Hangul, Korean alphabet, brand



03

Rexle, Dogok (Seoul, Korea)

A mammoth residential complex consisting of 3,002 units

- Completion : 2006.02
- 87-225m² 3,002 dwelling units
- Highest subscription rate in the history of simultaneous pre-sale of apartments



03

04

Parkrio, Jamsil (Seoul, Korea)

A mammoth residential complex consisting of 6,864 units

- Completion : 2008.08
- 52-173m² 6,864 dwelling units
- 2008 Selected as a Good Design in Korea



04

05

Yega The Park, Gumi
(Gyeongbuk, Korea)

- Completion : 2019.01
- 84 - 115m² 757 dwelling units
- Ten apartment buildings (B2/25F) and two neighborhood commercial facility buildings



05



01

01

Yega, Sajik (Busan, Korea)

- Completion : 2006.12
- 79 ~ 185㎡ 2,947 dwelling units
- 2007 Selected as a Good Design in Korea

04

Yega, Dongtan (Gyeonggi, Korea)

- Completion : 2007.09
- 99 ~ 115㎡ 938 dwelling units
- Gained the popularity of its tenants with an outdoor swimming pool in the a partment complex
- 2007 Selected as a Good Design in Korea



04



02

02

Yega, Byeollae New City
(Gyeonggi, Korea)

- Completion : 2012.01
- 101 ~ 134㎡ 652 dwelling units
- Designed by Perkins Eastman, a globally renowned design firm
- Application of new and renewable energies (solar energy ducts)

05

Yega, Bumuh (Daegu, Korea)

- Completion : 2009.02
- 108 ~ 227㎡ 400 dwelling units
- 2009 Selected as a Good Design in Korea



05



03

03

Yega, Guseo (Busan, Korea)

- Completion : 2010.10
- 84 ~ 157㎡ 1,095 dwelling units

06

Yega, Seokang (Seoul, Korea)

- Completion : 2007.10
- 83 ~ 149㎡ 635 dwelling units



06



01

01

Yega, Gwangan The Ocean
(Busan, Korea)

- Completion : 2014. 11
- 59 ~ 161㎡ 928 dwelling units



02

02

Yega, Jigok (Chungbuk, Korea)

- Completion : 2014.07
- 59 ~ 84㎡ 935 dwelling units



03

03

Platinum City, Shindorim (Seoul, Korea)

- Completion : 2006.05
- 61 ~ 123㎡ 794 dwelling units



04

04

Platinum, Namsan (Seoul, Korea)

Selected as a Good Design in Korea (2007)

- Completion : 2010.06
- 175 ~ 306㎡ 236 dwelling units
- Application of a cutting-edge 3D design method (BIM)



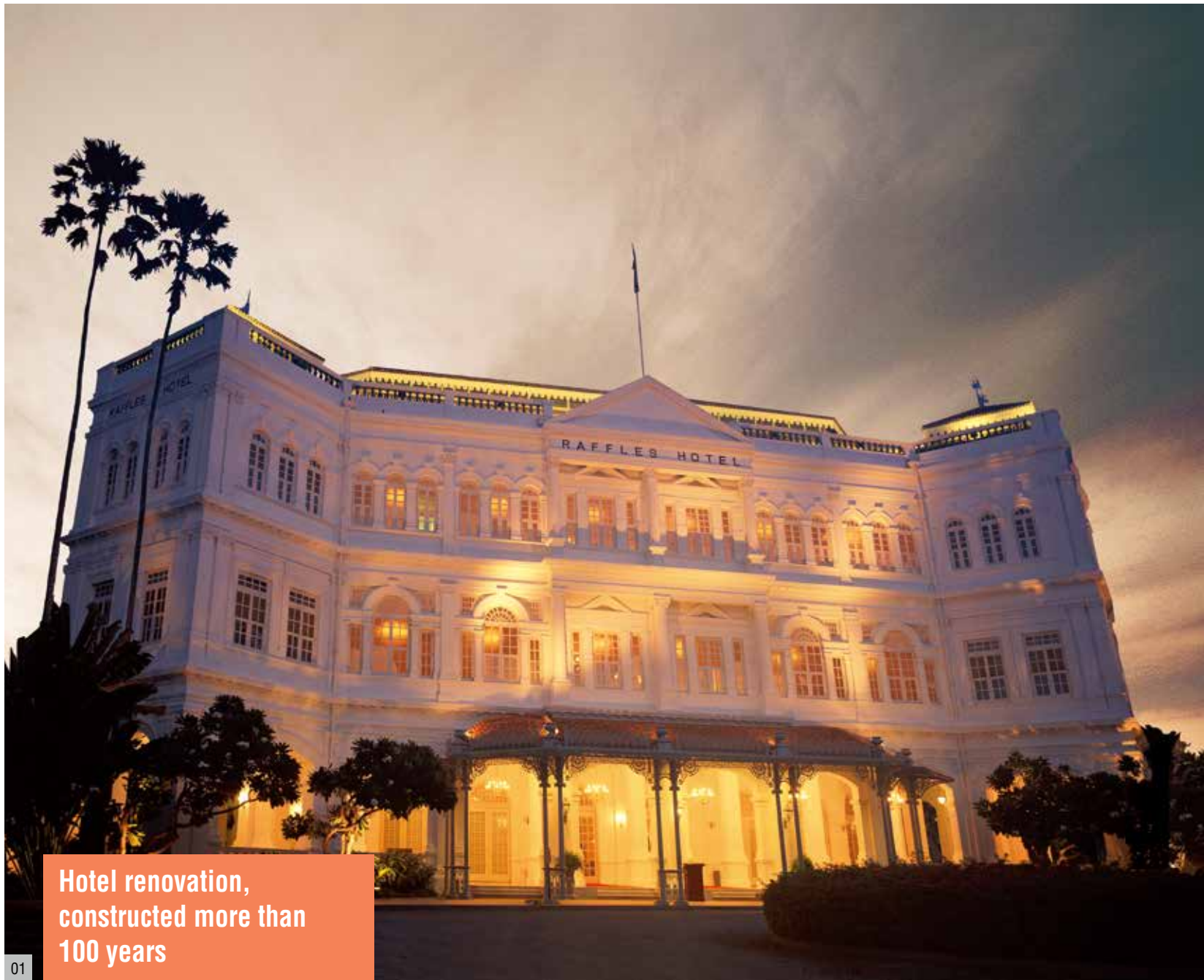
05

05

Platinum Value, Yeoksam (Seoul, Korea)

- Completion : 2007.01
- 109 ~ 150㎡ 166 dwelling units (Apartment),
64 ~ 148㎡ 112 dwelling units (Officetel)

Building & Residential Remodeling



Hotel renovation, constructed more than 100 years

01

01 Raffles Singapore (Singapore)

• Completion : 1991.04 / Client : Property Management Pte. Ltd. (Subsidiary of DBS Land) • Perfectly restored by Ssangyong E&C based on nothing else than faded blue-prints and old photographs



02



03

02, 03

Banyan Tree Club & Spa Seoul
(Seoul, Korea)

One of the most luxurious hotels in Seoul

■ Renovated as Banyan Tree, a six star hotel

- Completion : 2010.06
- Ssangyong transform Namsan Tower Hotel, a symbol of Seoul built by the late Soo-Geun Kim, a famed Korean architect, in 1969, into the elite Banyan Tree Club & Spa Seoul, through renovation



01



02

01, 02
**The Ambassador Seoul -
 A Pullman Hotel** (Seoul, Korea)

- Completion : 2021.11
- Opened in 1955, it is the oldest private hotel in Korea. Remodeling of the hotel's exterior, rooms, restaurants, bars, etc



03

03
**Remodeling of LG chem's Daejeon
 Institute of Technology 1st Research
 Building** (Daejeon, Korea)

- Completion : 2022.10
- Client : LG Chem



Housing & Remodeling

04

04
Yega Classic Dangsan (Seoul, Korea)

- Completion : 2010.07
- Korea's first renovation involving vertical expansion
- Korea's first apartment ever to get dampers as reinforcement to withstand an earthquake measuring 6.5 to 7
- Parking space added to the second floor underground
- Three building housing 284 dwelling units



05

05
Yega Classic Bamseom (Seoul, Korea)

**Korea's first renovation to
 add 2 floors vertically**

- Completion : 2012.12
- 1 buildings housing 90 dwelling units



01

01

Yega Classic Bangbae (Seoul, Korea)

- Completion : 2006.12
- First renovation project in Korea for a whole apartment complex, including landscape architecture, parking lot, public facilities as well as the interior of each household
- 3 buildings 216 dwelling units
- 2007 Selected as a Good Design in Korea
- 2007 Korea Civil Engineering & Architecture Awards



02

02

Yega Classic Dogok (Seoul, Korea)

- Completion : 2011.05
- Korea's first renovation in the Gangnam area
- Designed to withstand an earthquake
- 5 buildings housing 384 dwelling units



03

03

Ssangyong Apartment, Garak (Seoul, Korea)

- Completion (expected) : 2030.08
- 14 apartment buildings (B5/27F), 2,373 dwelling units



04

04

Songpa The Platinum (Seoul, Korea)

- Completion (expected) : 2023.12
- 2 apartment buildings (B3/16F), 328 dwelling units

Expressways, Road, Tunnel
Bridges
Railways & Express Railways
Metro & Subways
Ports
Airports
Dams & Water Supply System

Civil Engineering

Gadeok Grand Bridge (Busan, Korea)

Expressways, Road, Tunnel

02, 03

Marina Coastal Expressway (Singapore)

The highest price ever for a single contract of highway construction by the government of Singapore

- 2016 BCA Award for Construction Excellence
- 10.7 million accident-free man hours

- Completion : 2014.08 / Client : Singapore Land Transport Authority
- A 10 lane, underground expressway extending 1km
- Completed on a design and build basis
- With state-of-the-art 4D designing (BIM)
- 2010/2011/2012/2013 LTA Annual Safety Award Convention (Excellence)
- 2010/2011/2012/2013/2014 RoSPA Occupational Health & Safety Award (Gold)
- 2010/2011/2012/2013/2014 WSH Sharp Awards
- 2012 LTA Annual Safety Award Convention-Accident Free Million Man-hour's Award
- 2014 Singapore Land Transport Excellence Awards (Safety and Environmental Excellence)



02



01

01 Expansion of Jungbu Expressway (Gyeonggi, Korea)

- Completion : 2001.11
- L=11.024km, Bridges (L=1.8km/10locations), Tunnel (L=0.97km/2locations)



03



01

01
Toegyeon-Jinjeop Road Construction Project (Gyeonggi, Korea)
 • Completion : 2017.12
 • L=11.36km



02

02
Yeongdong Expressway Facility Repair and Rehabilitation Project-Section 2 (Gangwon, Korea)
 • Completion : 2017.12
 • Bridges 77 locations



03

03
Busan New Port -2nd Access Road Section 1 (Busan, Korea)
 • Completion : 2017.01
 • L=5.7km



04

04
Expansion of Kyungbu Expressway (Suwon-Cheongwon, Korea)
 • Completion : 1993.07
 • L=9.48km (6-lane : 6.48km, 8-lane : 3.00km),
 Bridges (L=0.53km/11 locations)



05

05
Donghae Expressway (Gangwon, Korea)
 • Completion : 2004.12 • L=8.5km



01

01

Jungbu Naeryuk Expressway
(Yeosu-Gumi, Korea)

- Completion : 2003.12
- L=11.6km



02

02

Miryang-Ulsan Expressway Section 2
(Miryang-Ulsan, Korea)

Korea Expressway Corporation Best Project Site (2017)

- Completion : 2020.12
- L=3.58km
- Korea's first use of the LTE action-cam safety helmet and smartphone monitoring system for real-time management of construction processes and safety.
- Korea Expressway Corporation 2017 Best Project Site (the most prestigious road construction award in Korea) and Multiple Awards for Health & Safety)



03

03

Miryang-Ulsan Expressway Section 4
(Miryang-Ulsan, Korea)

- Completion : 2020.12
- L=3.72km

04

Bundang-Naegok Intercity Highway
(Gyeonggi, Korea)

- Completion : 1993.04
- L=5.9km



04



05

05

Chungju-Jecheon Expressway
(Chungbuk, Korea)

- Completion : 2015.07
- L=5.82km

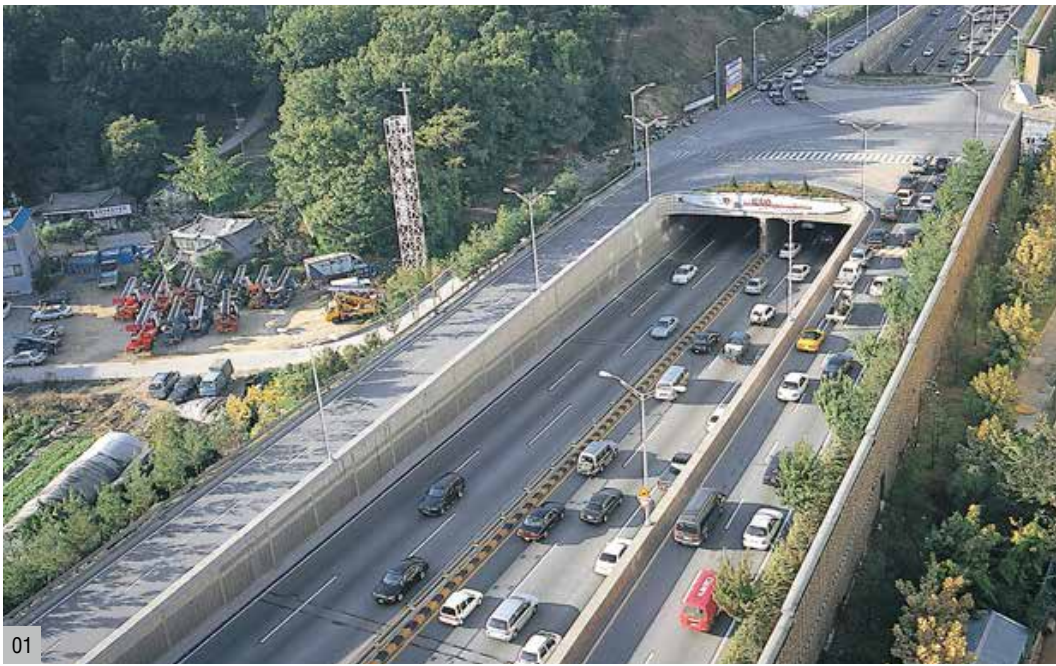


06

06

Gangbyeon Northern Road Extension
(Seoul, Korea)

- Completion : 2007.04
- L=3.0km (8-lane → 10-lane)



01

01
Bundang-Suseo Intercity Highway
 (Gyeonggi, Korea)

- Completion : 1993.08
- L=3.8km



02

02
Dongbu Express Highway (Seoul, Korea)

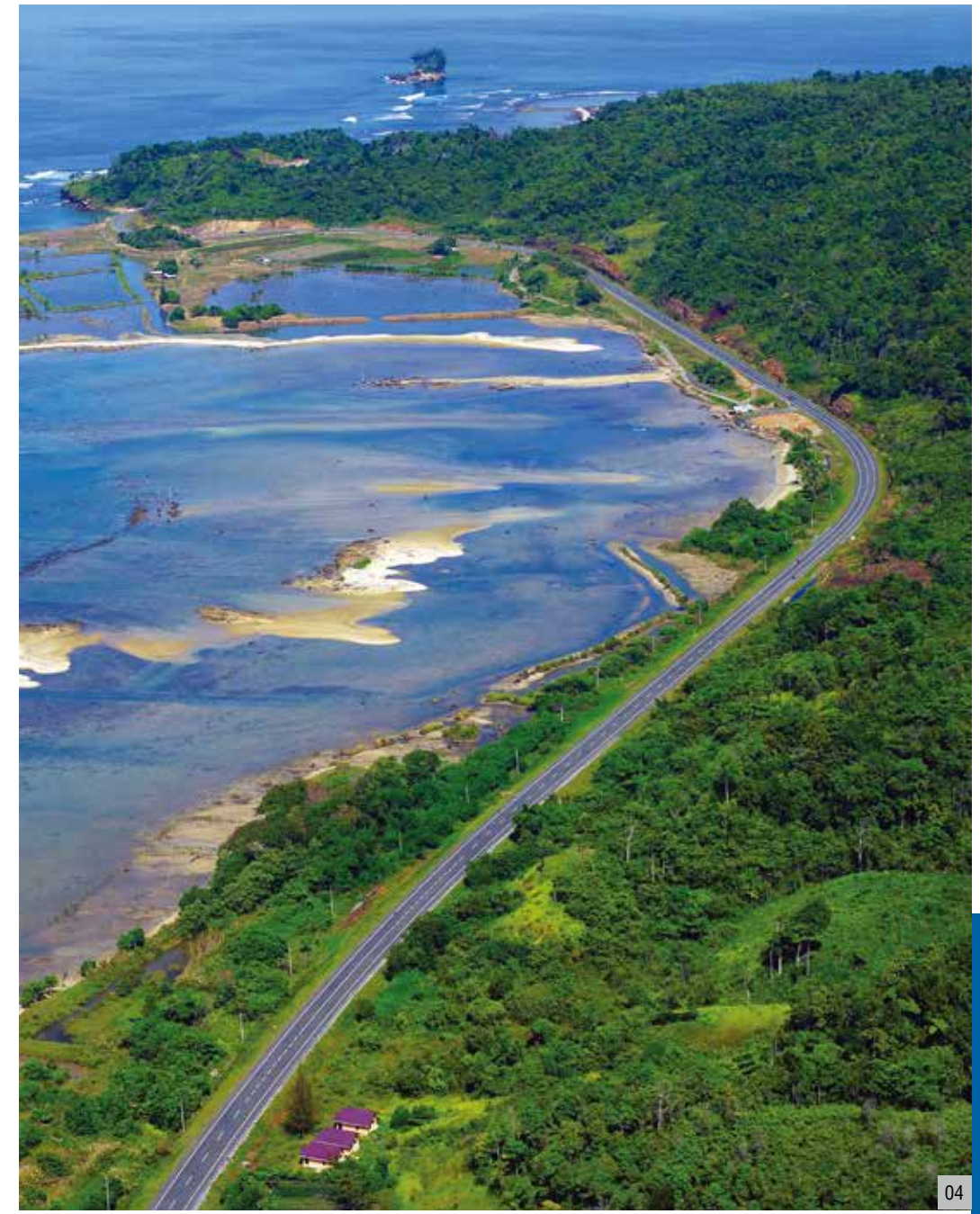
- Completion : 1994.02
- L=6.96km



03

03
Daegu-Pohang Expressway
 (Gyeongbuk, Korea)

- Completion : 2004.12
- L=9.4km



04

04
Aceh Road and Bridge Reconstruction
 (Aceh, Indonesia)

The largest project for recovery from the tsunami disaster

- Completion : 2011.08 / Client : USAID (U.S. Agency for International Dev't)
- Completed the largest tsunami recovery project by establishing new bridges (60.1km) and recovering the two-lane marine roads and nine bridges at a combined length of 104.4km.
- Owing to repeatedly successful construction project implementations, an additional new order was won for a coastal road 13.2km in length, which includes 4 bridge sections.



05

05
Jakarta Toll Road (Jakarta, Indonesia)

- Completion : 1996.06 / Client : PT Jasa Marga
- L=1.9km



01

01
**Vietnam Southern Coastal Road,
 Section Thu Bay~Kenh 14 Bridge**
 (Vietnam)
 • Completion : 2015.07 / Client : Ministry of Transport



02

02
North-South Corridor
 (Madhya Pradesh, India)
 • Completion : 2012.12 / Client : National Highways Authority of India
 • Expressway construction project with total length of 179km in 4 sections. Given the length of about 160km from Seoul to Daejeon, it is a large-scale unprecedented project among overseas ones



03



04

03
Second National Highway
 (Madhya Pradesh, India)
 • Completion : 2001.04 / Client : Ministry of Surface Transport

04
Third National Highway (Bihar, India)
 • Completion : 2004.02 / Client : National Highways Authority of India

05
**Singapore's North-South Corridor
 Sections N102** (Singapore)
 • Completion (expected) : 2027.04 / Client : Singapore Land Transport Authority
 • L=1.55km(two-way,six-lanetunnel)
 • An underground expressway section under construction between two MRT lines (DTL and NEL), a section considered the greatest engineering challenge among all North-South Corridor construction sites



05

06
**Singapore's North-South Corridor
 Sections N111** (Singapore)
 • Completion (expected) : 2027.04 / Client : Singapore Land Transport Authority
 • L=2.75km(a six-lane tunnel and overpass)
 • Sole contractor awarded based on the Design & Build scheme



06

07
Maghrib Motorway Extension (Kuwait)
 • Completion : 1986.11 / Client : Ministry of Public Works
 • L=21km



07

08
Assafar Motorway Extension (Kuwait)
 • Completion : 1984.05 / Client : Ministry of Public Works
 • L=9.5km



08

Bridges



01, 02

Unam Grand Bridge, Sunchang-Unam Highway (Jeonbuk, Korea)

Extradosed Bridge

- Completion : 2011.11
- Applied the latest bridge installation method (Extradosed Bridge)
- 2012 Korea Civil Engineering & Architecture Awards Technology Grand Prize Award
- 2012 Korea Land & City Design Competition Grand Prize Award



03

Gimpo Grand Bridge (Gyeonggi, Korea)

One of the largest bridges over the Han River

- Completion : 1997.10
- Applied the As part of the Seoul Ring Road Expressway, the 2,280m total length of the bridge was the longest crossing the Han River at the time of construction completion in 1997.
- The first bridge in the world to be constructed in segments using the 3D Long-Line Bed System.
- L=2.28km(MSS : 0.95km, FCM : 0.93km, FSM : 0.4km)
- PSC Box Girder Bridge



04

Gadeok Grand Bridge (Busan, Korea)

- Completion : 2010.12
- The 780m marine bridge, the 240m ground ramp bridge, the 270m temporary ramp bridge, and the 473m x 43.5m-53m surface road.
- Steel Box Girder Bridge



Work Processes





01

01
Gaya Overpass (Busan, Korea)

A two-storey bridge

- Completion : 2001.12
- Steel Box Girder Bridge



02

02
Hwameong Bridge (Busan, Korea)

- Completion : 2012.06
- Cable Stayed Bridge



03

03, 04
Gwangan Grand Bridge (Busan, Korea)

A two-storey bridge

- Completion : 2002.12
- The first Korean construction of a 2-storey sea bridge
- Suspension Bridge



04



05

05
Seogwipo Tourism Port Bridge (Jeju, Korea)

- Completion : 2009.08
- The longest Pedestrian Bridge in Korea (L=0.169km)
- Pedestrian Cable Stayed Bridge

Railways & Express Railways



01

01, 02

Honam Express Railway KTX (Chungnam-jeonbuk, Korea)

- Completion : 2014.09
- The PSM(Precast Span Method) has been applied to the installation of 177 spans ranging in 30m / 35m in width, which were fabricated for the bridge section from an external site in advance to reduce the construction period.



02



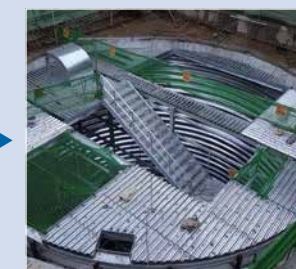
| Method for installing vertical shaft within a deep underground tunnel |



Connecting the main tunnel with a vertical shaft at a depth of 74 m



Installing corrugated pipe at a depth of 74 m, using a 750-ton crane



Completed installation of corrugated steel pipe for a vertical shaft

03

03

Kyungbu Express Railway, SRT (Suseo-Pyeongtaek, Korea)

74-meter deep underground tunnel

- Completion : 2016.12
- Constructed 6km of tunnel 50m underground (on average)

Work Processes





01

01
Suwon-Incheon Double Track Railway
Section3 Subbase Course Construction
 Project (Gyeonggi, Korea)

- Completion : 2020.12
- L=11.51km



02

02
Honam Express Railway, KTX
 (Jeonbuk, Korea)

5D BIM applied – Korea's first

- Completion : 2014.12



03

03
Kyung Eui Line Railway (Seoul, Korea)

- Completion : 2014.03
- Underground Station construction of Gajwa Station was the first project in Korea to sequentially apply the downward method in carrying out the construction from aboveground to underground.



04

04
Jeolla Line Railway (Jeonbuk, Korea)

- Completion : 2013.04



05

05
Bundang Line Railway (Seoul, Korea)

- Completion : 2012.10
- Construction of a new 1.660km roadbed and tunnel:shield TBM of 1.692km (riverbed section) / NATM 1.102km.



01

01

Jungang Line Railway (Gyeonggi, Korea)

- Completion : 2010.02



03

03

Kyungbu Express Railway, KTX
(Chungbuk, Korea)

- Completion : 2001.11



02

02

Ori-Jukjeon Railway (Gyeonggi, Korea)

- Completion : 2008.09
- A total project length of 1.771km, which includes a 0.358km bridge, a 0.243km retaining wall and the station (one site).



04

04

Gwangju Metropolitan Railway
(Gwangju, Korea)

- Completion : 2001.12



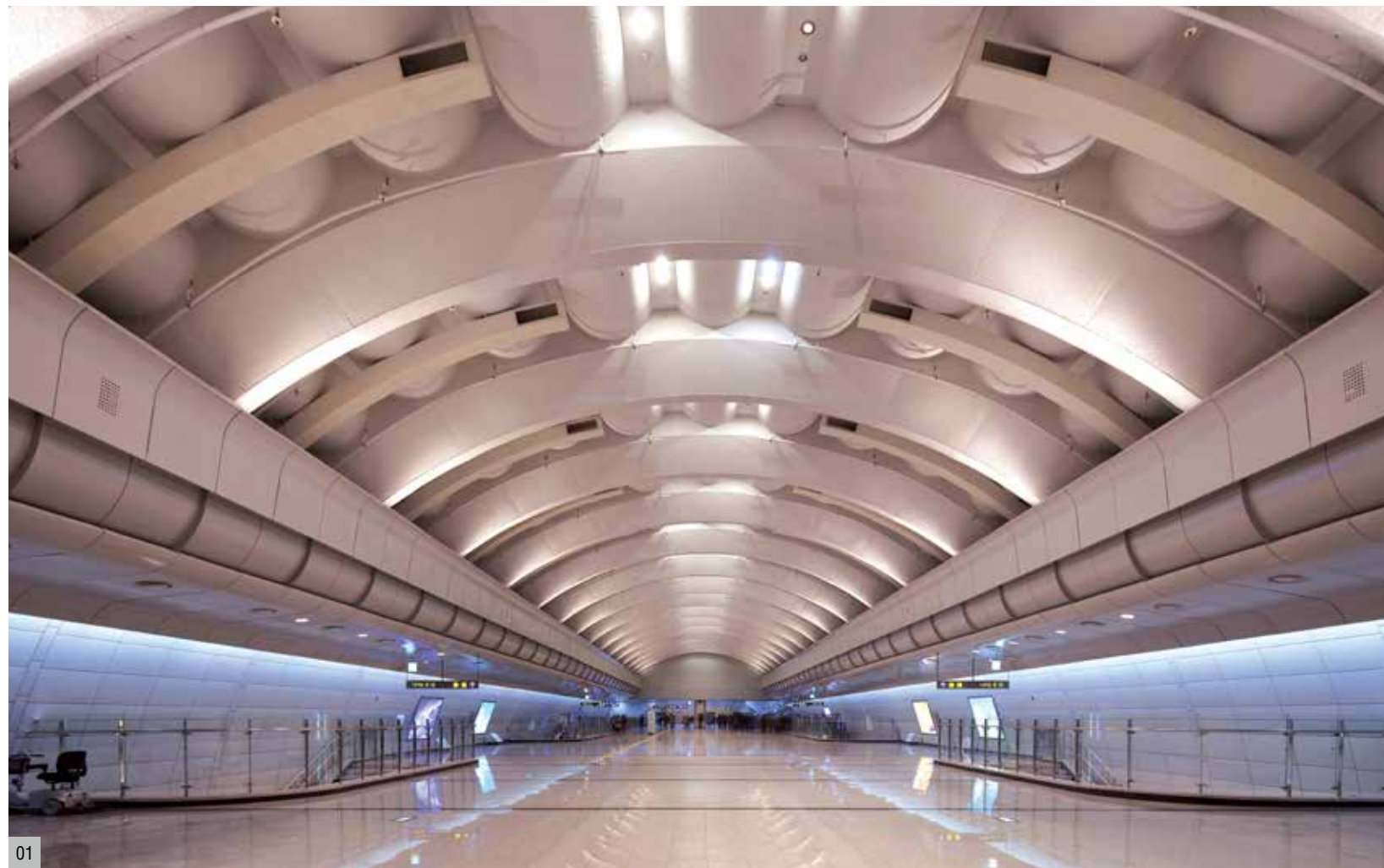
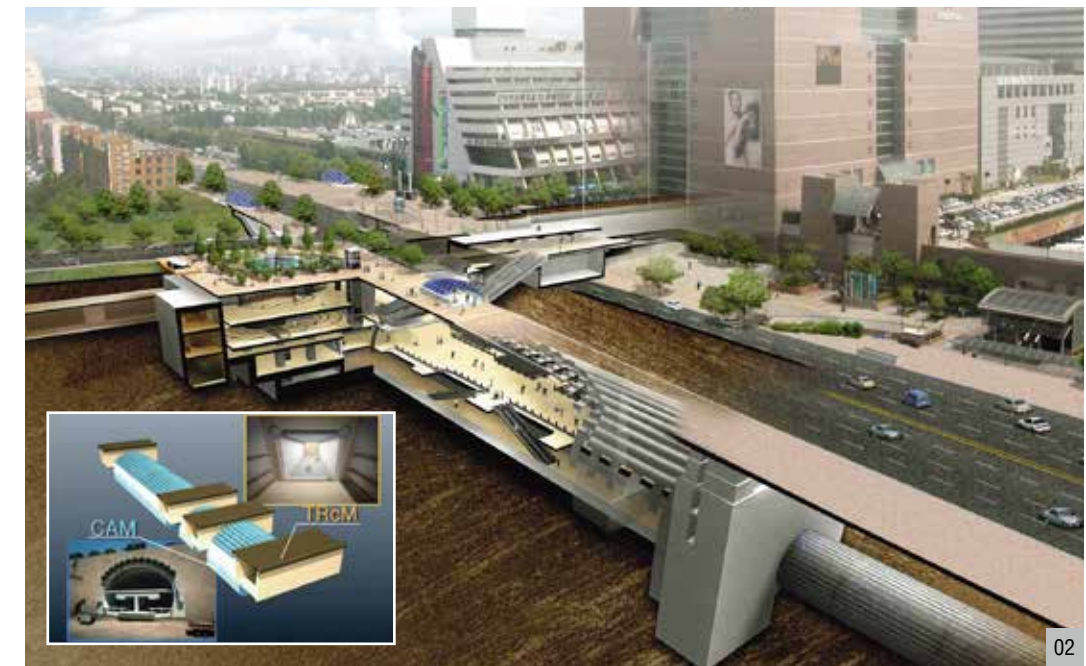
05

05

Bujeon-Sasang Railway (Busan, Korea)

- Completion : 2004.11

Metro & Subways



Awarded the 2009 Brunel Medal by the Institute of Civil Engineers (ICE) of UK -Brunel Medal-

ICE was established in 1818 for the purpose of continuing the development in civil engineering and to promote the status of civil engineers. ICE has since grown to have a worldwide membership of over 84,000 registered members in 150 countries.



01, 02, 03, 04

Seoul 923 Subway Station (Seoul, Korea)

Passing just 15cm below the existing subway line

- First in the world to apply TRcM and CAM techniques
- Awarded the globally privileged Brunel Medal (2009)

- Completion : 2009.07
- L=1.78km, 2 stations
- 2009 The Annual Civil Works Awards (Grand Prize)
- 2009 Korea Civil Engineering & Architecture Awards
- 2009 Selected as a Good Design in Korea

Work Processes





01



02



03

01, 02, 03

Downtown Line Stage 2 (Singapore)

The highest price ever for a single section of subway contracted by the government of Singapore

- Awarded the top honor (Best Managed Rail / Road Infrastructure) at the Land Transport Excellence Awards (LTEA) 2016 as the sole recipient, becoming the first Korean company to receive Singapore's most prestigious recognition for excellence in civil engineering.
- The longest accident-free period in the history of subway construction in Singapore
- Awarded the Champion shield at the Annual Safety Award Convention

- Completion : 2016.03 / Client : Singapore Land Transport Authority
- L=1.065km, 2 stations
- Design & Build project, where one company is in charge of both design & construction
- Application of the cutting-edge 4D design technique (BIM)
- LTA Annual Safety Award Convention 2010/2011 (Merit)/2012 (Excellence)/2013/2014 (Champion)
- 2011/2012/2013/2014/2015/2016 RoSPA Occupational Health & Safety Award (Gold)
- 2011/2012 LTA Annual Safety Award Convention-Accident Free Million Man-hour's Award
- 2011/2013/2014/2015 WSH Sharp Awards
- 2014 Singapore Land Transport Excellence Awards (Safety and Environmental Excellence)
- 2016 Singapore Land Transport Excellence Awards (Best Managed Rail / Road Infrastructure - Project Partner)
- Attained 16.75 million accident free man-hours (2016.03), Recorded the longest zero accident period in the history of subway construction in Singapore

04

Thomson-East Coast Line, Contract T308 (Singapore)

- Completion (expected) : 2023.10 / Client : Singapore Land Transport Authority
- L=1.78km (1 stations)
- Won the bid despite not being the lowest bidding in the PQM tender, due to high level of design proposal.



04

05

Lot 5, Busan Metro Line 1 Extension Project (Busan, Korea)

First in the world to apply M-CAM technique

- Completion : 2016.12

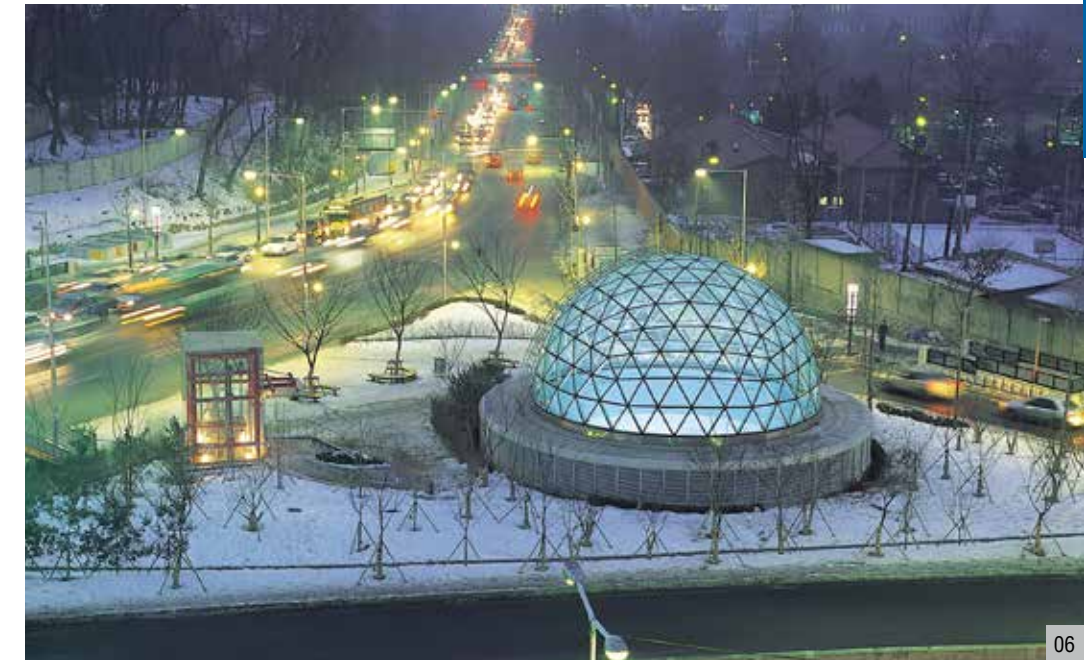


05

06

Noksapyeong Station, Seoul Subway line 6 (Seoul, Korea)

- Completion : 2001.04
- Korea's first large cross section NATM tunnel station (width of 23.4m, height of 16.1m).
- 2001 Seoul Architecture Awards



06



01

01
Seoul Subway Line 5 Extension (Hanam Line), Section 1-2
 (Seoul, Korea)
 • Completion : 2021.05
 • L=1.82km



02

02
Daegu Subway Line 1 (Daegu, Korea)
 • Completion : 1998.05
 • First Subway construction project in Korea to achieve 1 million accident free man-hours.

03
Busan Subway Line 3 (Yonsan-Sajik, Korea)
 • Completion : 2002.05



03

04
Gunja Station, Seoul Subway line 5
 (Seoul, Korea)
 • Completion : 1996.02



04

05
Gunja Station, Seoul Subway line 7
 (Seoul, Korea)
 • Completion : 1996.07



05

06
Incheon Subway Line 1 (Imhak-Gyesan, Korea)
 • Completion : 1999.12



06

07
Incheon Subway Line 2 (Incheon, Korea)
 • Completion : 2014.11



07

Ports



01



02



03

01, 02, 03

Busan Port Shinsundae Container Terminal (Busan, Korea)

The first and largest container harbor in Korea

- Completion : 1991.12 / Extension : 1997.08
- Won the Gold Tower Order of Industrial Service Merit for the first time in Korean construction sector in 1991
- Won the Bronze Tower Order of Industrial Service Merit on the first Marine Day in 1996

04

Pohang New Port Swell Control Facility Construction Project (Pohang, Korea)

- Completion : 2021.03
- L=0.85km (Jetty : 0.70km, Removal of wavebreake 0.105km, other ancillary construction works)



04



01

01
Gunsan Port-Flood, Tidal Waves & Sea Storm Control Facility Construction Project (Gunsan, Korea)
 • Completion : 2020.01



02



03

02, 03
Tangeum Lake Boat Race Course Construction Project (Chungju, Korea)
 • Completion : 2012.12

04
Gunjang Port Sea Route Dredging Project - Stage 2 (Gunsan, Korea)
 • Completion : 2019.12



04

05
Gungchon Port Erosion-Sediment Reduction Facility Construction Project (Samcheok, Korea)
 • Completion : 2016.11



05

06
The Two-berth Kunjang Port (Jeonbuk, Korea)
 • Completion : 2011.08



06



01

01 The Three-berth Incheon North Port (Incheon, Korea)

- Completion : 2009.05
- A facility that can accommodate up to three 20,000 tons ships at a time (700m caisson- type quay wall).



02

02 Daepo Port Development (Gangwon, Korea)

- Completion : 2011.12
- Creating a site of 187,106m², breakwaters of 620m (including two lighthouses), sea wall of 680m, quay of 740m, and 302 meters-long bank harmonized with water.

03 Sokcho Port's New Waterway Breakwater & Revetment Construction (Gangwon, Korea)

- Completion : 2012.03



03

04 Reconstruction of Berth 10 to 14 on East Wharves at Port of Karachi (Karachi, Pakistan)

- Completion : 2012.04 / Client : Karachi Port Trust
- Karachi Port reconstruction works is Pakistan's largest port reconstruction project, whereby an annual container cargo processing volume is about 1.17 million TEU
- 788.2 meter in total length



04

05 Reconstruction of Berths 15 to 17A at Port of Karachi, Phase 2 (Karachi, Pakistan)

- Completion : 2017.05 / Client : Karachi Port Trust
- In recognition of the successful delivery of Phase 1, Ssangyong E&C won the project despite not being the lowest bidder
- 932 meters in total length



05

Airports



The hub airport for North East Asia

01 Incheon International Airport (Incheon, Korea)

• Completion : 2000.11 • Train bed facility for Transportation Center, civil works at southern part of Runway No. 1, construction of mooring of passenger terminal • Incheon International Airport, designed as a hub of Northeast Asia, is an excellent facility meeting all ICAO standards. It is an up-to-date facility with a multitude of composite functions and is designed for the smooth movement of aircraft on runways



02 Mongomeyen International Airport Terminal (Equatorial Guinea)

• Completion : 2017.12 / Client : GE-Proyectos
• The largest construction project that a Korean construction company has won in Africa since 2010.



03 Bata International Airport (Equatorial Guinea)

• Completion (expected) : 2023.08 / Client : GE-Proyectos



04 Gimpo Airport (Seoul, Korea)

• Completion : 1987.12
• New 3,200m x 70m runway and 400m extension.
• Five taxiways, one lighter than air aircraft station, a 4,500m drain, the 2,000m national highway, the 1,000m Gulpo Steam, a 4,500m new irrigation channel and the transfer and establishment of eight bridges.

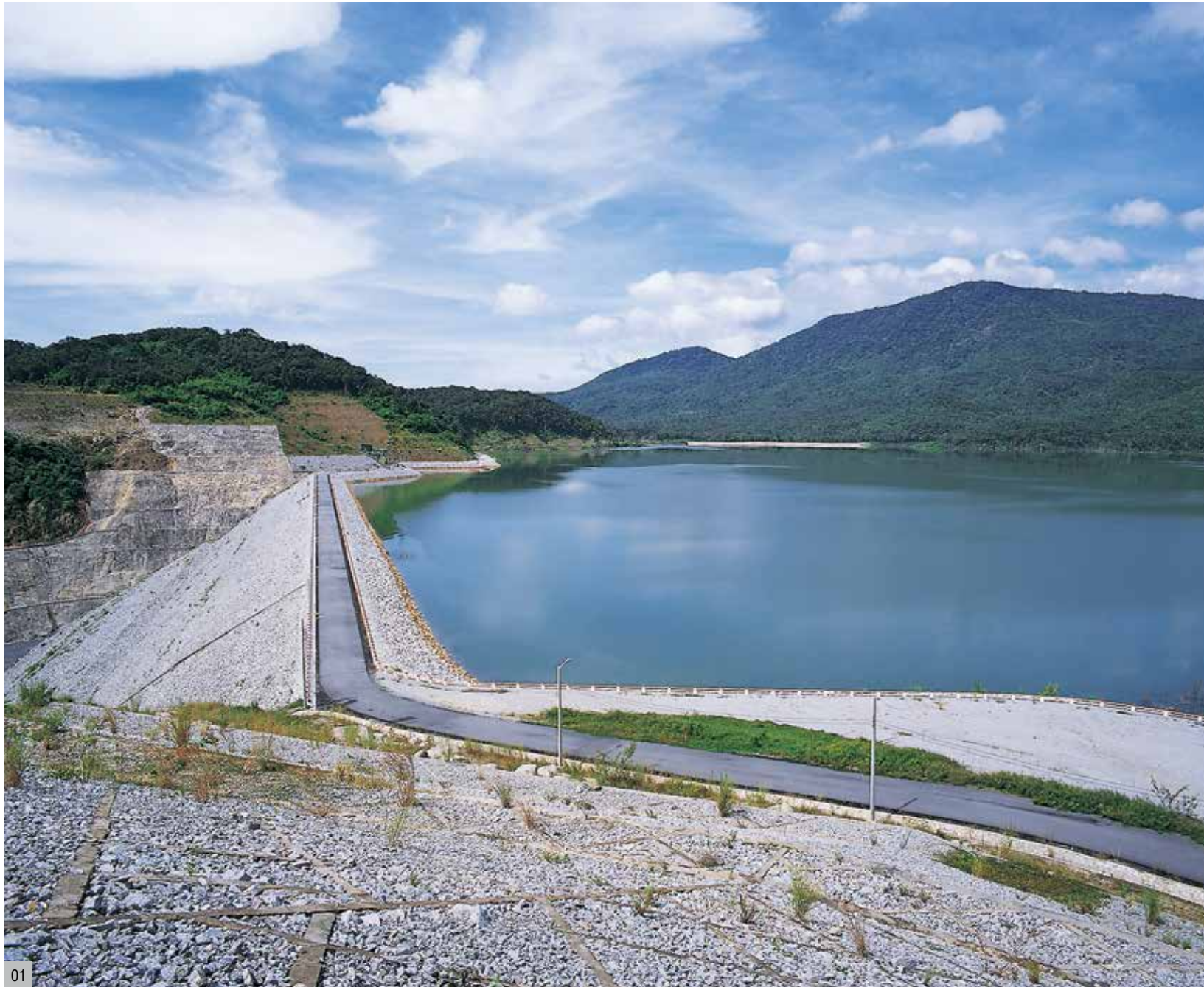
05 Saipan International Airport (Saipan)

• Completion : 1988.11 / Client : Commonwealth Ports Authority (CPA)

06 Gimhae Airport Taxi way (Busan, Korea)

• Completion : 2007.06
• Including a parallel 2,011m x 30m taxiway, four 180m x 30m perpendicular taxiways, one 105m x 30m high speed taxiway, and the 60,900m² station.

Dams & Water Supply System



01

01 Dami Dam (Bao Lac, Vietnam)

- Completion : 2000.10 / Client : Electricity of Vietnam(EVN) • Joint Venture with Maeda Corporation of Japan • Fill-Rock Dam(72m X 490m), Tunnel(D=4.5~7m / L=1.877km)

02

Boryeong Multi-purpose Dam
(Chungnam, Korea)

- Completion : 1998.11
- Core-type rockfill dam (H=50m, L=291m) with storage capacity of 117 million tons
- Diversion tunnel (L=0.334km), Access road (L=2.2km)
- **Outstanding Construction Awards from the Korea Water Resource Corporation**



02

03

Jangheung Multi-purpose Dam
(Jeonnam, Korea)

- Completion : 2006.09
- Concrete faced rockfill dam (H=53m, L=403m) with storage capacity of 191 million tons



03

04

Pyeonghwaui Dam (Gangwon, Korea)

- Completion : 1988.09
- Concrete faced rockfill dam (H=125m, L=601m) with storage capacity of 2.63 billion tons
- First phase dam and supporting construction work



04



01

01
Restoration of Nakdong-River
 (Daegu-Gyeongbuk, Korea)
 • Completion : 2012.05



02

02
Restoration of Geum-River (Gongju, Korea)
 • Completion : 2012.05



03

03
Water Supply Improvement Project in Kurdistan region (Halabja, Iraq)
 • Completion : 2016.05 / Client : Ministry of Municipality and Tourism
 • Drinking water supply facility for a 150,000 population in the Sulaymaniyah and Halabja region(100,000m³/ day).
 • River Water Intake, Collection Shaft, Water Treatment Plant, Treated Water Transmission and Storage Facilities, Water Treatment Plant Expansion.
 • Water Distribution Network (Halabja 327km, Sulaymaniya 305km), Transmission pipelines(43km).



04

04
Deoksan Water Purification Plant
 (Gyeongnam, Korea)
 • Completion : 2000.12
 • Contracted under a turnkey base, it introduced high degree processing to Korea



05

05
Wide-area Water Supply in Conjunction with Boryeong Dam
 (Chungnam, Korea)
 • Completion : 1997.08



06

06
Seoul Area Wide-area Water Supply
 (Gyeonggi, Korea)
 • Completion : 1999.06



01

01
Gwangju-Yongin Water Intake Source Supply (Gyeonggi, Korea)
 • Completion : 2000.12



02



03

02, 03
Chungnam Jungbu District Wide-area Water Supply (Chungnam, Korea)
 • Completion : 2009.11

04
GongChon Purification Plant (Incheon, Korea)
 • Completion : 2011.08



04

05
Bupyeong Purification Plant (Incheon, Korea)
 • Completion : 2008.04



05



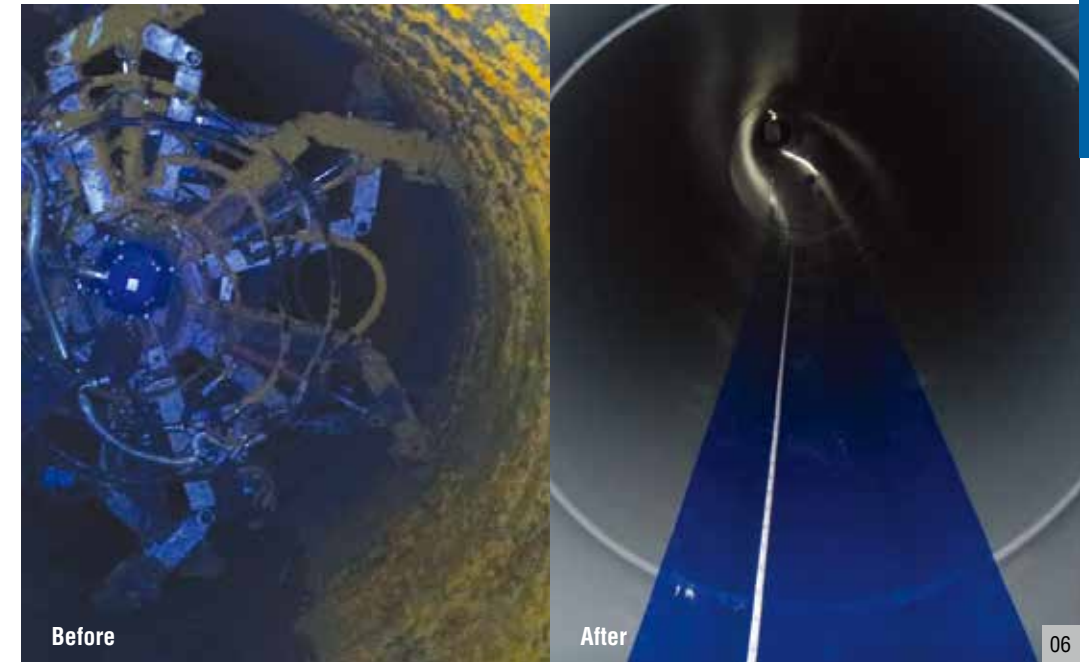
05

06
Renewal of obsolete pipes for water supply from Geum-River (Jeonbuk, Korea)

Renewed without replacement of obsolete pipes

- Five mechanical steps including pipe interior cleaning at high pressure, removal and recovery of paint film, surface treatment and painting
- Record of improving 54km of water supply pipeline for Seoul and its surrounding area

- Completion : 2017.02
- Mid-sized pipes with length of 77km and diameter of 1 to 1.5m installed



Before

After

06

Petrochemical & Energy Plant

Desalination & Environmental Facilities

Industrial Plants

Electricity & Communication Systems

Plant & Electricity

Petrochemical & Energy Plant



A Total petrochemical plant

- This plant consists of an oil refinery, a gas feeding unit, crude oil storage and others. The refinery has a Bunker-C Cracking Center, a value added facility that can crack 140,000 barrels per day of heavy oil into light oil.

01

01 S - OIL Storage Tank (Gyeongnam, Korea)

- Completion : 1995.06

02

S - OIL Bunker-C Cracking (BCC I) and Desulfurization Plant (Gyeongnam, Korea)

- Completion : 1995.12
- The facility was the largest single oil refining facility in the world at the time of completion, capable of fully vacuum processing residual oil, made possible in partnership with France's IFP.

03

S - OIL Bunker-C Cracking (BCC II) Catalytic Cracking Plant (Gyeongnam, Korea)

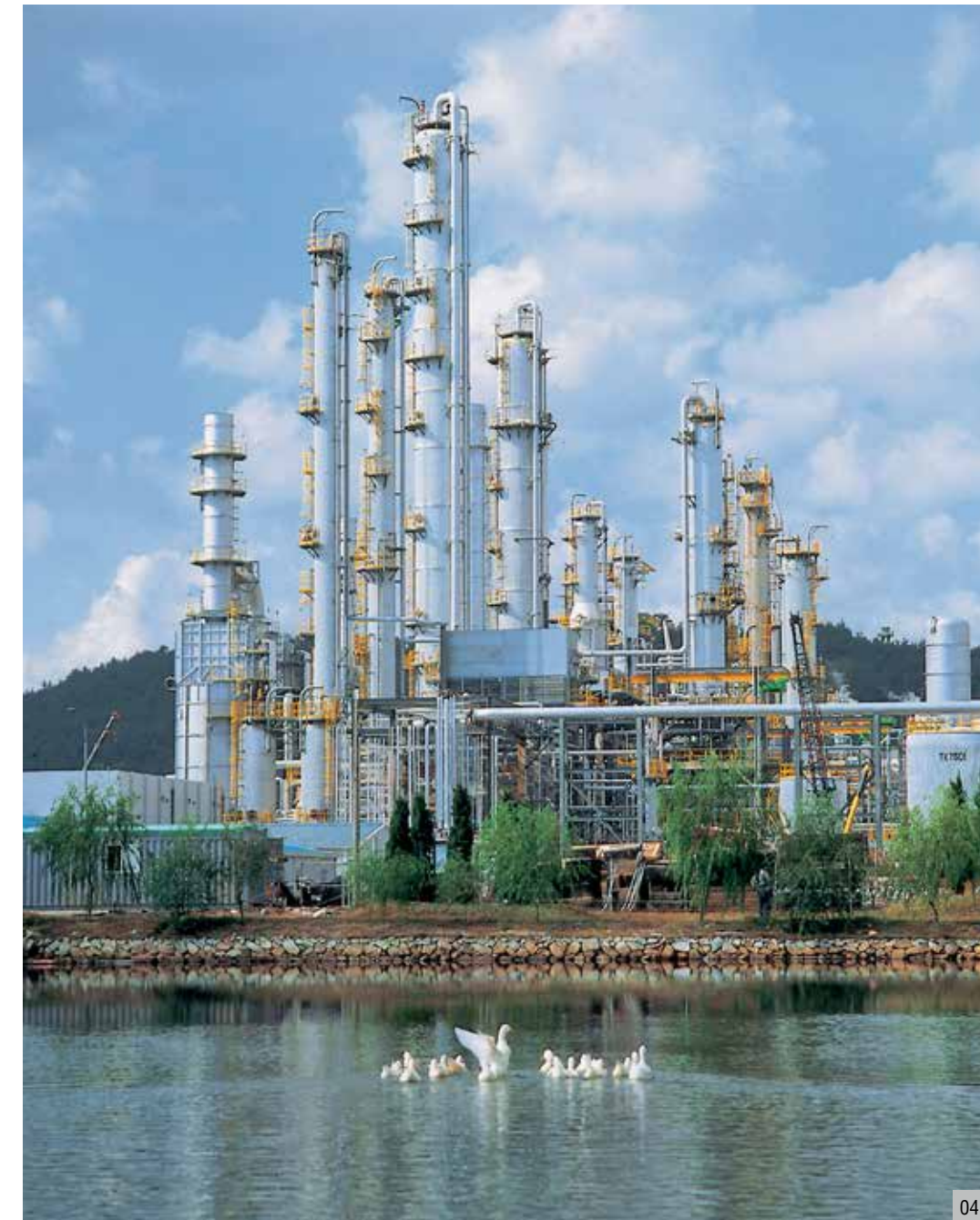
- Completion : 1997.02



02



03



04

04

S - OIL B.T.X. Production Facility (Gyeongnam, Korea)

- Completion : 1991.02



01

04

Pyeongtaek Product Oil Storage Facilities (Gyeonggi, Korea)

• Completion : 2009.05



04



02

01, 02

Tanjung Priok Tank Terminal (Tanjung Priok, Indonesia)

Completed on an EPC basis
(designing, procurement and construction)

- A storage for refined petroleum products consisting of 17 tanks (with a combined capacity of 1.59 million barrels) completed on an EPC basis
- The client is VOPAK, a multi-national corporation from the Netherlands

• Completion : 2010.03 / Client : PT. Jakarta Tank Terminal

05

Export Oriented Petroleum Factory (Balongan, Indonesia)

• Completion : 1994.09 / Client : Pertamina



05



03

03

Seosan Storage Tank (Chungnam, Korea)

Korea's largest oil storage

- 24 tanks (with a combined capacity of 14.60 million barrels)
- Large scale storage for crude oil and refined petroleum products equivalent to oil imported for a period of 11 days

• Completion : 2005.07

06

Karaj Gas Injection Facility (Iran)

• Completion : 1993.11 / Client : National Iranian Oil Co.

07

Kharg Oil Tank Rehabilitation (Iran)

• Completion : 1993.06 / Client : National Iranian Oil Co.



06



07



01

01
Dilute Sulfuric Acid Process Facility
 (Jeonnam, Korea)
 • Completion : 2000.04



02

02
Cheonan Cheongsu Intergrated Energy Heat Source Plant
 (Chungnam, Korea)
 • Completion : 2009.10



03

03
Magok Community Energy Supply Facility Construction Project
 (Seoul, Korea)
 • Completion : 2022.02

04
Suralaya Steam Power Plant (Indonesia)
 • Completion : 1996.06 / Client : Perusahaan Umum Listrik Negara(PLN)



04

05
Wind Power Plant, Jeju Island (Jeju, Korea)
 • Completion : 2000.01



05

06
Gimhae Airport Aircraft Oil & Gas Storage Tank
 (Busan, Korea)
 • Completion : 2019.04
 • Client : Korea Airports Corporation
 • Three underground aircraft oil & gas storage tanks (13,000 bbl), hydrant facilities



06



01

01
Thermal Power Plant, Samcheonpo (#3, 4) (Gyeongnam, Korea)
 • Completion : 1994.03
 • Client : Korea Electric Power Corporation (KEPCO)



02

02
Gas main pipeline between East Gimcheon and Mungyeong (Gyeongbuk, Korea)
 • Completion : 2012.12
 • Client : Korea Gas Corporation (KOGAS)
 • Pipe Length Extension : 30" x 44.5km / 20" x 15.6km



03

03
Gas main pipeline between Incheon and Gyeongseo (Gyeonggi, Korea)
 • Completion : 2010.07
 • Client : Korea Gas Corporation (KOGAS)
 • Pipe Length Extension : 30" x 32.2km



04

04
Gas main pipeline between Yeongjong and Gyoha (Gyeonggi, Korea)
 • Completion : 2014.12
 • Client : Korea Gas Corporation (KOGAS)
 • Pipe Length Extension : 30" x 29.4km



05

05
LNG Main Pipeline for Jeondong-Cheongju (Chungbuk, Korea)
 • Completion : 2019.12
 • Client : Korea Gas Corporation (KOGAS)
 • Pipe Length Extension : 30" x 1.9km / 20" x 22.8km



06

06
Gas main pipeline for areas without gas supply in Gangwon (Gangwon, Korea)
 • Completion : 2017.05
 • Client : Korea Gas Corporation (KOGAS)
 • Pipe Length Extension : 20" x 66.4km
 • Build a new supply management office of 8 buildings.



01

01
Gas main pipeline between Seungju and Goheung and between Gokseong and Gurey (Jeolla, Korea)

- Completion : 2016.10
- Client : Korea Gas Corporation (KOGAS)
- Pipe Length Extension : 20" x 87.27km
- Build a new supply management office of 9 buildings.



02

02
Chuncheon Community Energy Supply Facility (Gangwon, Korea)

- Completion : 2016.11
- Client : Korea Gas Corporation (KOGAS)
- Pipe Length Extension : 30" x 600m
- Build a new supply management office of a building.



03

03
Hwaseong Dontan 2 District Community Energy Supply Facility (Gyeonggi, Korea)

- Completion : 2017.06
- Client : Korea Gas Corporation (KOGAS)
- Pipe Length Extension : 26" x 6.19km
- extend supply management office of a building.



04

04
LPG pipeline for Jangsoo(Section 1) (Jeolla, Korea)

- Completion : 2019.01
- Client : Korea LPG Pipelines Institute(LPGPI)
- facility for LPG of 2 tanks(each 30t) and Build a new management building.
- Installation for Gas pipes and boiler(1,296 dwellings)



05

05
Air Force oil pipeline and storage facilities at Chungju (Chungbuk, Korea)

- Completion : 2021.09
- Client : Armed Forces Financial Management Corps(MND)
- build for a tank(4,000bbl) and drain tank(2,000gal) and oil pipeline(1.3km) of facility.

Desalination & Environmental Facilities



01, 02, 03

Jubail Desalination Plant (Saudi Arabia)

The world's largest desalination plant
(at the time of its completion)

■ Around 800,000 tons of drinking water is produced, supporting the needs of 2.5 million people per day.

- Completion : 2009.07 / Client : Power & Water Utilities Company for Jubail & Yanbu
- 2,750MW power facilities and 27 evaporator units on a site with a total gross area of 157,336 .
- World's largest scale Desalination Plant at the time of construction completion in 2009.



01

01

Discharge Facilities of Noksan Sewage and Noksan Sewage Treatment Plant (Busan, Korea)

- Completion : 2004.08
- Acquired certification of Excellent Safety & Sanitary Management for the third consecutive year since 1998



02

02

Unayzah Sewage & Storm Water Disposal System (Saudi Arabia)

- Completion : 1989.06 / Client : Ministry of Municipal & Rural Affairs



03

03

Buldang Sewage Treatment Plant (Gyeonggi, Korea)

- Completion : 2007.09



04

04

Jinju Sewage Treatment Plant (Gyeongnam, Korea)

- Completion : 2008.12
- Sewage Treatment capacity of 150,000m³ / per day.

KSMBR[®]

KSMBR, waste water treatment technology developed by Ssangyong E&C, won the Grand Prize at the Korean Environment Technology Awards and was certified as Korea's New Environment Technology in 2007. In 2011, it earned Green Technology Certification from the Ministry of Environment.

Ssangyong E&C developed the e-MBR technology built upon the KSMBR to save energy and enhance efficiency, and it was certified as Korea's New Environment Technology in 2011.



05

05

Daegu Dalseong Industrial Complex Wastewater Treatment Plant (Daegu, Korea)

- Completion : 2009.12
- Sewage Treatment capacity of 25,000m³ / per day.
- KSMBR, New Environment Technology application.



06

06

Daecheong-Dam Upstream Sewage Facility Expansion (Chungbuk, Korea)

- Completion : 2011.12
- Sewage Treatment capacity of 18,000m³ / per day (Okcheon Sewage Treatment Plant).
- Sewage pipes 255km.
- KSMBR, New Environment Technology application.



01

01
Asan National Industry Sewage Treatment Center (Chungnam, Korea)
 • Completion : 2002.04



05

05
Recycle Processing Center, Jung-gu (Seoul, Korea)
 • Completion : 1998.03



02

02
Flue Gas Desulfurization Facility for Boryeong Thermal Power Plant (unit 3~6 / Chungnam, Korea)
 • Completion : 1998.12



06

06
Plaster Refinery Facility for Samcheonpo Thermal Power Plant (Gyeongnam, Korea)
 • Completion : 1997.08



03

03
Waste Disposal Complex, Bucheon (Gyeonggi, Korea)
 • Completion : 2000.09



04

04
Recycle Processing Center, Anseong (Gyeonggi, Korea)
 • Completion : 2009.01



07

07
Seongnam Incineration Facility (Gyeonggi, Korea)
 • Completion : 1993.11



08

08
Livestock Sewage Treatment Center, Hongseong (Chungnam, Korea)
 • Completion : 2001.12

Industrial Plants



01, 02, 03, 04

Ssangyong Cement Donghae Plant
(Gangwon, Korea)

The world's largest cement producing factory

- Completion : 1991.08
- Capacity : 11,500,000 tons per year



01

01
Ssangyong Cement Singapore Plant
 (Singapore)
 • Completion : 1983.08 / Client : Business Institute

04
Ssangyong Motor Co. Plant
 (Gyeonggi, Korea)
 • Completion : 1991.12



04



02

02
Daebul Shipping Base for Ssangyong Cement (Jeonnam, Korea)
 • Completion : 1995.09

05
Aluminium Hydroxide Production Plant (Jeonnam, Korea)
 • Completion : 1995.11



05



03

03
Asan ALC Plant for Ssangyong Cement (Chungnam, Korea)
 • Completion : 1993.03

06
Ssangyong Heavy Industries Plant
 (Gyeongnam, Korea)
 • Completion : 1988.03



06

07
Tangerine Processing Facility (Jeju, Korea)
 • Completion : 2002.02
 • Processing Capacity : 400 metric tons of tangerines per day
 • The first tangerine processing facility in Korea



07

Electricity & Communication Systems



The first in the world to install on and offshore iron transmission towers

01 **345kV Yeongheung Transmission Line** (Gyeonggi, Korea)

- Completion : 2004.12
- The world's first large-scale construction of power cables with 82 power transmission towers on both land and the sea

02

765kV New Taebaek Transmission Line (Gangwon, Korea)

- Completion : 2000.03
- This high-voltage power cable project, the first in Korea, is often compared with the high-speed railroad project



02

03

345kV Taeon-Asan Transmission Line (Chungnam, Korea)

- Completion : 1995.01
- Facility to supply electric power generated by the Taeon Thermolectric Power Plant



03



04

04

345kV New Anseong-New Yongin Transmission Line (Gyeonggi, Korea)

- Completion : 2001.11

05

345kV East Ulsan Branch Transmission Line (Gyeongnam, Korea)

- Completion : 2014.12



05



01

01
345kV New Uijeongbu Transmission Line (Gyeonggi, Korea)
 • Completion : 2016.03



02

02
Signal facility of the Daegu-Ulsan section in the Gyeongbu High Speed Railway (Daegu - Ulsan, Korea)
 • Completion : 2010.12



03

03
Signal and communication facility of the Iksan – Gimje section in the Honam High Speed Railway (Jeonbuk, Korea)
 • Completion : 2014.12

04
Railway power facility of the Suncheon – Yeosu section in the Jeolla Line (Jeonnam, Korea)
 • Completion : 2012.05



04

05
Electrical work of South Container Terminal (202) in the New Busan Port (Busan, Korea)
 • Completion : 2010.12



05

06
Power distribution at the Samsung residential district, Goyang (Gyeonggi, Korea)
 • Completion : 2014.12



06

07
Ssangyong Motors' 154kV Substation, Pyeongtaek (Gyeonggi, Korea)
 • Completion : 1992.12



07

Research & Development

Ssangyong E&C is applying high value-added technology to the global construction market of the 21st Century-



Ssangyong E&C maintains cooperative relations with the government, institutes and universities and leads the development of construction technology by nurturing professional researchers



National Research

- Development of New Micropiling Method with Geotextile Pack
- Development of Design and Construction Technology for High Rise Complex Building
- Development of Mega Structure System
- Development of Complex Water Treatment Plant and System for Middle and Small River Purification

Industry-University-Institute Cooperation Research

- Development of BIM Based Construction Management Integrated System
- Research on the Standardized Model for Zero-Energy Housing
- Development of Stable Steel Damper for Remodeling
- Evaluation of Building Energy Consumption and Research on Effective Measures to Improve the Building Energy Rating
- Research on Realization of Enhanced Facade Design System

Environmental Technology Research

- Development of Pipe Rehabilitation Technology for Advanced Water Transmission Main
- Advanced and Energy Saving Wastewater Treatment System Using Fine and Coarse Bubble Aeration and Excess Dissolved Oxygen in Membrane Bioreactor (e-MBR)
- Advanced Wastewater Treatment System Using RBDCOD Recovery and Phosphorous Crystallization Technique for Sludge Reduction

New Technology (NET) Overview

- Dry Exterior Insulation Using Truss Insulation Frame and Water Repellent Glass Wool (New Construction Technology No. 901)
- Bridge Expansion Method Using JH Refraction Expansion Joints (JHR-EJ) for Bridges Consisting of Hinged Links and Dust-Proof Cover Plates (New Construction Technology No. 841)
- Construction Method Using Composite Beams (BESTOBEAM) Consisting of H-Shaped and U-Shaped Sections (New Construction Technology No. 835)
- Cellular Arch Method (CAM) : A shallow tunneling method that employs columntype diaphragm walls (New Construction Technology No. 745)
- PHC pile head reinforcing method for foundation works using one-cutting and hexagon-shaped steel caps (New Construction Technology No. 723)
- Pre-Stressed Wale and Square Pipe Struts (PS-S) Method : An engineering method for constructing a temporary retaining wall system with pre-stressed wale strips and closed square-pipe struts (New Construction Technology No. 640)

IP Portfolio Overview

- 112 Patents
- 22 Designs
- 434 Copyrights

Knowledge Management

- Publishes the annual "Ssangyong Construction & Engineering Technology", a technical magazine on construction and engineering
- Organizes technology exchange events at least three times per year

Design

Winning 3 major design awards in a row!



Emergency light

If there is an emergency such as a fire or power outage, a part of the emergency light can be separated and be used as a LED flash-light. The flash-light is automatically charged while not being used.



Bicycle Rack & Lock

Under the system, bicycles are parked utilizing the dead spaces in apartment buildings. Using a "digital kit", which is a number lock, users can park their bicycles in dead spaces in the apartment complex.



Equal

A shower-head that bends in various angles means that even smaller children can conveniently enjoy their shower.



Clover

A shower system that includes a folding chair means that users that have difficulties such as the elderly or expectant mothers are able to conveniently sit down.



The iF Design Award was first established in 1953. The iF Design Award, which is one of the world's three major design awards, is organized by the International Forum Design in Hanover. The competition comprehensively evaluates design, functionality, innovativeness, convenience and eco-friendliness to decide winners. We won Six iF product design awards in 2012 with the ►Emergency light ►Bicycle Rack & Lock ►Equal ►Clover designs, in 2013 with the ►Concealed Door Lock ►Emergency Helmet.



reddot design award
winner 2012

The Red Dot Design Award was established in 1955 and is one of the world's three major design awards. The Red Dot Design Museum picks winners that have the most innovative designs in three categories, including product, communication, and concept. We won two Red Dot product design awards in 2012 with the ►Emergency light ►Bicycle Rack & Lock designs.



IDEA (International Design Excellence Awards), which is also one of the world's three major design awards, was established in 1980. The Industrial Designers Society of America picks the winner, based on the product characteristics, such as originality, artistic quality, eco-friendliness, business profitability, and problem solving ability. Our product designs of ►Equal and ►Clover became the IDEA finalists of 2012.

GOOD DESIGN & Certifications



The Most Prestigious Design Certification in Korea Obtained Good Design Certifications for Seven Consecutive Times!

Good Design is the most prestigious design certification in Korea, which was established in 1985 by the Korean government to promote the development of design and strengthen product competitiveness. Ssangyong E&C has obtained many Good Design certifications in the areas of architecture, environment, material, and interior design consecutively for seven times since 2006 when the Good Design certification was expanded to the construction sector.

2013

- | | |
|----------------|-----------------------|
| Product Design | • Emergency Helmet |
| | • Concealed Door Lock |

2012

- | | |
|--------------------------------|-----------------------------|
| Architectural Design | • State Tower Namsan |
| | • Yega, Byeollae New City |
| | • Guri Culture & Art Center |
| Electric & electronic products | • Emergency light |
| Public facilities | • Bicycle Rack & Lock |

2011

- | | |
|----------------------|----------------------------------|
| Architectural Design | • Yega, Gimpo Han River New City |
| | • 2nd Yega, Guseo |

2010

- | | |
|----------------------|--------------------------------|
| Architectural Design | • Banyan Tree Club & Spa Seoul |
| | • Tuscany Hills |
| | • Pyeongchang-dong Oboe Hills |

2009

- | | |
|----------------------|---|
| Environmental Design | • Yega, Geumho-dong (Maingate) |
| | • Yega, Bumuh (Victoria Garden) |
| | • Seoul 923 Subway Station |
| Architectural Design | • Seongnam Senior Health Centers |
| | • General Lecture Center, Soongsil University |
| | • Benikea Premier Songdo Bridge Hotel |

2008

- | | |
|----------------------|---|
| Environmental Design | • Parkrio, Jamsil (Kangnaruru) |
| Architectural Design | • The Korea National University of Arts |
| Interior Design | • Yega, Guseo-dong |

2007

- | | |
|----------------------|--|
| Environmental Design | • Yega, Sajik (Water's Theme Park) |
| | • Yega, Sajik (Rock's Theme Park) |
| | • Yega, Cheongwon (Exterior Design) |
| | • Yega, Dongtan (Main Garden) |
| Architectural Design | • Yega Classic, Bangbae-dong (Piloty Design) |
| | • Yega, Bukgwangju (Gateway Design) |
| | • Yega, Sajik (Gateway Design) |
| Interior Design | • Platinum, Namsan |

2006

- | | |
|----------------------|--|
| Material Design | • Elivator Interior Design (Eco Art Hitech) |
| | • Elivator Interior Design (Eco Art Classic) |
| Architectural Design | • Yega, Ochang (Main Garden) |



Tuscany Hills



Yega, Geumho



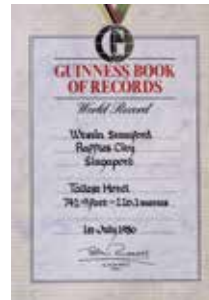
Oboe Hills



Yega Classic, Bangbae

Awards

Honors received as a result of the world-best technology and construction abilities -



Guinness Book of Records

Registration of Raffles City Complex, Singapore in the Guinness Book of Records as the tallest hotel in the world

- Raffles City Complex



Raffles City Complex



Gold Tower Order of Industrial Service Merit

Won the Gold Tower Order of Industrial Service Merit for the first time in Korean construction sector for its successful performance on the Shinsundae Container Terminal project

- Busan Port Shinsundae Container Terminal



Busan Port Shinsundae Container Terminal



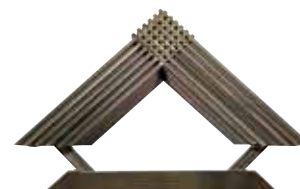
Ranked in the 2nd best construction contractor in the world

World-renowned construction magazine ENR selected Ssangyong as one of the top construction companies based on its achievements for building prestigious hotels and other up-market buildings. Ssangyong is known for its reputation of high technological skills in the worldwide market.

2	Joannou & Paraskevaides (Overseas) Ltd.
3	Aoki Corp.
4	Penta-Ocean Construction Co. Ltd.
5	ENKA Construction & Industry Co. Inc.
HOTELS/MOTELS	
RANK FIRM	
1	Ballast Nedam International BV
2	Ssangyong Engineering & Const. Co. Ltd.
3	Hyundai Engineering & Const. Co. Ltd.
4	Fletcher Construction
5	Murray & Roberts Contractors



Suntec City Complex



BCA Awards

It is the most prestigious construction award by the Building & Construction Authority (BCA) of Singapore after evaluating design and construction management capability and construction technologies of the architectures completed in the previous year.

- Won the award 36 times in total



Awarded the Champion shield at the Annual Safety Award Convention of Singapore

Ssangyong E&C's exceptional capability to ensure safety has been demonstrated in many occasions: For example, it is the first Korean contractor to receive the Champion shield at the Land Transportation Authority's Annual Safety Award Convention, the most prestigious safety-related prize in Singapore.

- Urban metro phase 2 – Champion (2013), runner up (2012)
- Marina Coastal Highway – Recognized 5 years in a row (2009-2013)



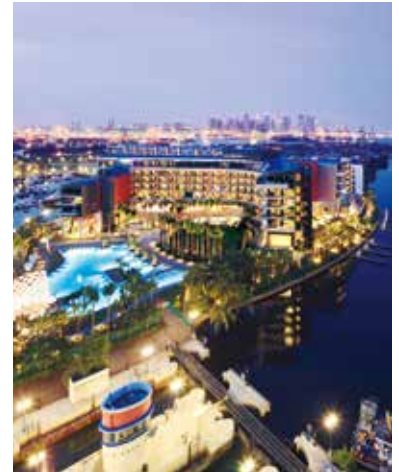
Marina Coastal Expressway (Singapore)



BCA Green Mark

The BCA Green Mark is a certification with four ratings of Platinum, Gold Plus, Gold and Certified, awarded by the Building & Construction Authority (BCA) of Singapore based on the assessment of energy & water saving efficiency, building management, interior and individual building innovation. It is recognized as one of the major standards on environmental-friendliness along with LEED in the US and BREEAM in Britain.

- 2020 Woodlands Health Campus Singapore
- 2018 Bedok Mixed Development Project / Marina Bay Sands Hotel / Capital Tower
- 2013 Yale Nus college
- 2012 Bedok Mixed Development Project(Residence/Bedok Mall)
- 2011 Quayside Isle
- 2010 W Singapore Sentosa Cove / Marina Bay Sands Hotel
- 2007 The Oceanfront @ Sentosa Cove



W Singapore Sentosa Cove



The Brunel Medal of ICE & Paper Award

The Brunel Medal is awarded every year to individuals or organizations operating in the construction environment industry for their contribution to the development of civil engineering by the prestigious Institution of Civil Engineers (ICE) of the U.K. who has since its foundation of 1818 more than 80,000 members in over 150 countries.

- 2009 Seoul 923 Subway Station



Seoul 923 Subway Station



RoSPA Occupational Health & Safety Awards

The award is given by the Royal Society for Prevention of Accidents (RoSPA) of the U.K. to companies or sites for all industrial sites in the world with high records of performance in the areas of safety management system operation, hygiene and health.

- 2019 Forest Wood Condominium
- 2018 Forest Wood Condominium
- 2017 Thomson-East Coast Line T308
- 2016 Downtown Line Stage 2
- 2015 Downtown Line Stage 2 / Bedok Mixed Development Project / Yale NUS College
- 2014 Marina Coastal Expressway / Downtown Line Stage 2 / Bedok Mixed Development Project / Yale NUS College
- 2013 Marina Coastal Expressway / Downtown Line Stage 2 / Bedok Mixed Development Project
- 2012 Marina Coastal Expressway / Downtown Line Stage 2 / W Singapore Sentosa Cove / Quayside Isle
- 2011 Marina Coastal Expressway / Downtown Line Stage 2
- 2010 Marina Coastal Expressway
- 2009 The Oceanfront @ Sentosa Cove
- 2008 The Oceanfront @ Sentosa Cove



The Oceanfront @ Sentosa Cove

Awards

Honors received as a result of the world-best technology and construction abilities -



ISO 9001



ISO 14001



ISO 45001



KOSHA 18001



KOSHA-MS

Singapore's highest recognition for civil engineering excellence
Awarded the top honor at the Land Transport Excellence Awards (LTEA) 2016
 - DTL921 / Land Transport Authority (LTA of Singapore) -

Singapore Construction Awards(BCA) - 36 times
 - Recognized at the Singapore Construction Awards for 10 years running -

- 2020 • Woodlands Health Campus Singapore (Green Mark–Platinum)
- 2018 • Yale–NUS College
 - Bedok Mall and Residences (Green Mark–Platinum)
 - Marina Bay Sands Hotel (Green Mark–Platinum)
 - Capital Tower (Green Mark–Platinum)
- 2017 • Construction Excellence Award for Bedok Mall and Residences (Commercial / Mixed Development)
- 2016 • Marina Coastal Expressway (Construction Excellence)
- 2015 • Ssangyong E&C (BIM Awards–Gold Winner)
- 2014 • Bedok Mall / Bedok Bus Interchange / Bedok Residences Project (BIM Awards–Gold Plus)
 - W Singapore Sentosa Cove (Construction Excellence)
- 2013 • Yale NUS College (Green Mark–Platinum)
- 2012 • Bedok Mall- Residence (Green Mark–Platinum)
 - Bedok Mall- Bedok Mall (Green Mark–Platinum)
 - Marina Bay Sands Hotel (Construction Productivity Awards–Platinum)
 - Marina Bay Sands Hotel (Construction Productivity Awards–Gold)
 - Marina Bay Sands Hotel (Green and Gracious Builders Award–Star)
 - Marina Coastal Expressway & Downtown Line Stage 2 (Green and Gracious Builders Award–Star)
- 2011 • W Singapore Quayside Isle (Green Mark–Platinum)
- The Oceanfront @ Sentosa Cove (CPA–Projects Gold Award)
- 2010 • W Singapore Sentosa Cove (Green Mark–Platinum)
 - Marina Bay Sands Hotel (Green Mark–Gold)
- 2009 • The Oceanfront @ Sentosa Cove (Green and Gracious Builders Award–Excellent)
- 2007 • The Oceanfront @ Sentosa Cove (Green Mark–Platinum)
- 2005 • Changi Rise Condominium (Best Buildable Design)
- 2002 • Capital Tower (Construction Excellence)
- 2001 • Tan Tock Seng Hospital (Construction Excellence)
 - Capital Tower (Best Buildable Design)
- 2000 • Capital Square Building (Construction Excellence)
 - Capital Square Building (Best Buildable Design)
 - Peirce Villas (Construction Excellence)
- 1999 • New K.K Hospital (Construction Excellence)
- 1997 • Suntec City Complex (Construction Excellence)
- 1991 • Singapore Indoor Stadium (Construction Excellence)
- 1987 • Bayshore Park Resort Condominium (Construction Excellence)
 - Raffles City (Construction Excellence)

Korea Civil Engineering & Architecture Technology Awards
 - Maeil Business Newspaper, Ministry of Land, Infrastructure and Transport -

- 2019 • The Nexen UniverCITY (Grand Prize, Business building category)
- 2012 • Unam Grand Bridge
- 2011 • State Tower Namsan
- 2010 • Marina Bay Sands Hotel
- 2009 • Seoul 923 Subway Station
- 2008 • Bucheon Technopar III Biz-City
 - Seongnam Jungwon-gu Public Health Center
- 2007 • Yega Classic, Bangbae-dong
- 2006 • The Korea National University of Arts

Korea Construction Culture Awards
 - The Seoul Economic Daily, Ministry of Land, Infrastructure and Transport -

- 2019 • The Nexen UniverCITY (Excellence Award)
- 2013 • Soongsil University Student Hall (Grand Prize)
- 2011 • Pyeongchang-dong Oboe Hills
- 2008 • General Lecture Center, Soongsil University (Grand Prize)
- 2007 • The Korea National University of Arts
- 2002 • Art Center, Kookmin University
- 2001 • Gangbuk Cheil Church
 - Munhwa Broadcasting Corporation, Daegu
- 1999 • Seoul Mobile Telecom Building, Mok-dong
 - KT&G Building
 - International Education Center, Kookmin University
- 1998 • Kyoungjic Han Memorial, Soongsil University
 - Youngrak Church 50th Anniversary Memorial Hall
- 1997 • Hyangseol Memorial Library, Soonchun-Hyang University
- 1996 • Ssangyong Villas in Bundang
- 1995 • Good Morning Securities Building
 - Bundang CHA Medical Center
- 1994 • Minjung (Elementary/Junior & High) School (Grand Prize)

Seoul Architecture Awards
 - The Seoul Metropolis -

- 2012 • General Lecture Center, Soongsil University
- 2011 • State Tower Namsan
- 2005 • Renovation of Zero one Design Center of Kookmin University
- 2004 • Renovation of Gymnasium #1, Olympic Park
- 2003 • Art Center, Kookmin University
- 2001 • Louis Vuitton New Concept Store
 - Noksapyeong Station, Seoul Subway Line 6
- 2000 • International Education Center, Kookmin University
- 1999 • KT&G Building
- 1998 • Youngrak Church 50th Anniversary Memorial Hall

Winner of the Korea BIM Awards for 3 years in a row
 - Building SMART KOREA, Ministry of Land, Infrastructure and Transport -

MaeKyung Good-to-Live-in Apartment Awards
 - Maeil Business Newspaper, Ministry of Land, Infrastructure and Transport -

Hankyung Residential Culture Awards
 - The Korea Economic Daily, Ministry of Land, Infrastructure and Transport -

Hekyung Green Housing Culture Awards
 - The Herald Business, Ministry of Land, Infrastructure and Transport -

2011 LEED Gold Certification
 - State Tower Namsan -

Overseas Performances

San Francisco
 Sacramento
 San Jose
 L.A.
 Anaheim
 San Diego



Kaluga (Russia)
 Istanbul
 Tripoli
 Amman
 Kurd
 Teheran
 Kuwait
 Al-Khobar
 Jubail
 Doha
 Riyadh
 Abu Dhabi
 Dubai
 Karachi
 New Delhi
 Madhya Pradesh
 Hanoi
 Fukuoka
 Seoul
 Tokyo
 Saipan
 Guam
 Palau
 Ho Chi Minh
 Brunei
 Singapore
 Kuala Lumpur
 Jakarta
 Bali
 East Timor
 Bata(Equatorial Guinea)
 Rwanda

Head Office & Branches

Head Office

Add : 299, Olympic-ro, Songpa-gu, Seoul, Korea, 05510
 Tel : 82-2-3433-7114
 Fax : 82-2-3433-7111

Yeongnam Branch Office

Add : Dongja BD 5F, 20, Beobwon-ro, Yeonje-gu, Busan, Korea, 47511
 Tel : 82-51-505-7002
 Fax : 82-51-505-0316

Overseas Subsidiaries

Ssangyong E & C GE S.A.

Add : Mongomo Presidential Palace, Mongomo, Equatorial Guinea
 Tel : 82-70-5089-2737

Ssangyong Engineering & Construction Co.,Ltd

Add : Office No.1, 2nd Fl., Al-Audhali Building, King Abdulla Road P.O. Box 1453, Al-Khobar 31952, Saudi Arabia
 Tel : 966-13-864-8807
 Fax : 966-13-864-4379

PT.Ssangyong Konsruksi Indonesia

Add : Suite 2804, 28th Floor, Menara Batavia Jl. K.H. Mas Mansyur Kav. 126 Jakarta-10220, Indonesia
 Tel : 62-21-5795-0377
 Fax : 62-21-5795-0379

Ssangyong Engineering & Construction (America)Inc.

Add : 2858 Stevens Creek Blvd. #207, San Jose, CA 95128
 Tel : 1-408-346-0500
 Fax : 1-408-346-0504

Ssangyong Libya Engineering & Construction JSC

Add : Gagaresh Road (behind of Saraef Mosque), Tripoli, Libya

Overseas Branches

Dubai Branch

Add : #1001, One by Omnyat, Business Bay, Dubai, UAE / P.O.Box 33189
 Tel : 971-4-359-1931
 Fax : 971-4-359-1932

Singapore Branch

Add : 20 Science Park Road #03-27/30 Teletech Park Singapore Science Park II Singapore 117674
 Tel : 3F 65-6336-1255
 Fax : 3F 65-6339-9590

Abu Dhabi Branch

Add : Unit No. M2, Ahmed Helel Building C74, Mussafah Shabiya 12, Mohammed Bin Zayed City, Abu Dhabi, UAE / P.O.Box 128839
 Tel : 971-4-359-1931
 Fax : 971-4-359-1932

Riyadh Branch

Add : Office No.1, 2nd Fl., Al-Audhali Building, King Abdulla Road P.O. Box 1453, Al-Khobar 31952, Saudi Arabia
 Tel : 966-13-864-8807
 Fax : 966-13-864-4379

Erbil Branch

Add : Land NO.29 / 101, Sector 7 in Aubara Dream Land, Block D, 8th Floor, Apartment No.33, Sulaymaniyah, Kurdistan Region of Iraq

Kuala Lumpur Branch

Add : Suite 18.05, 18th Floor, Kenanga International, Jalan Sultan Ismail 50250 Kuala Lumpur, Malaysia
 Tel : 60-3-2145-4529/39
 Fax : 60-3-2145-4548

Jakarta Branch

Add : Suite 2801, 28th Floor, Menara Batavia. Jl. K.H. Mas Mansyur Kav. 126, Jakarta 10220, Indonesia
 Tel : 62-21-5795-0377
 Fax : 62-21-5795-0379

Ho Chi Minh Branch

Add : Unit #503, Level 5, Metropolitan Tower, 235 Dong Khoi Street, District 1, Ho Chi Minh City, Vietnam
 Tel : 84-28-3822-7125
 Fax : 84-28-3822-7124

Hanoi Branch

Add : Level 5, 41A Ly Thai To St. Hoang Mai District, Hanoi, Vietnam
 Tel : 84-28-3938-8727
 Fax : 84-28-3938-8737

Karachi Branch

Add : House no. C-46, Block-2, Clifton, Karachi

New Delhi Branch

Add : Unit No. 803, 8th Floor, BPTP "Park Centra", NH-8, Sector-32, Village Silokhra, Gurgaon, Haryana, India / PIN:122002
 Tel : 91-124-4102-518,9
 Fax : 91-124-4836-409

Equatorial Guinea Branch

Add : Mongomo Presidential Palace, Mongomo, Equatorial Guinea
 Tel : 82-70-5089-2737

23AUG04

www.ssyenc.com

299, Olympic-ro, Songpa-gu, Seoul, Korea, 05510
TEL : 82-2-3433-7114 FAX : 82-2-3433-7111

GLOBAL SAE·A GROUP
 **SSANGYONG**